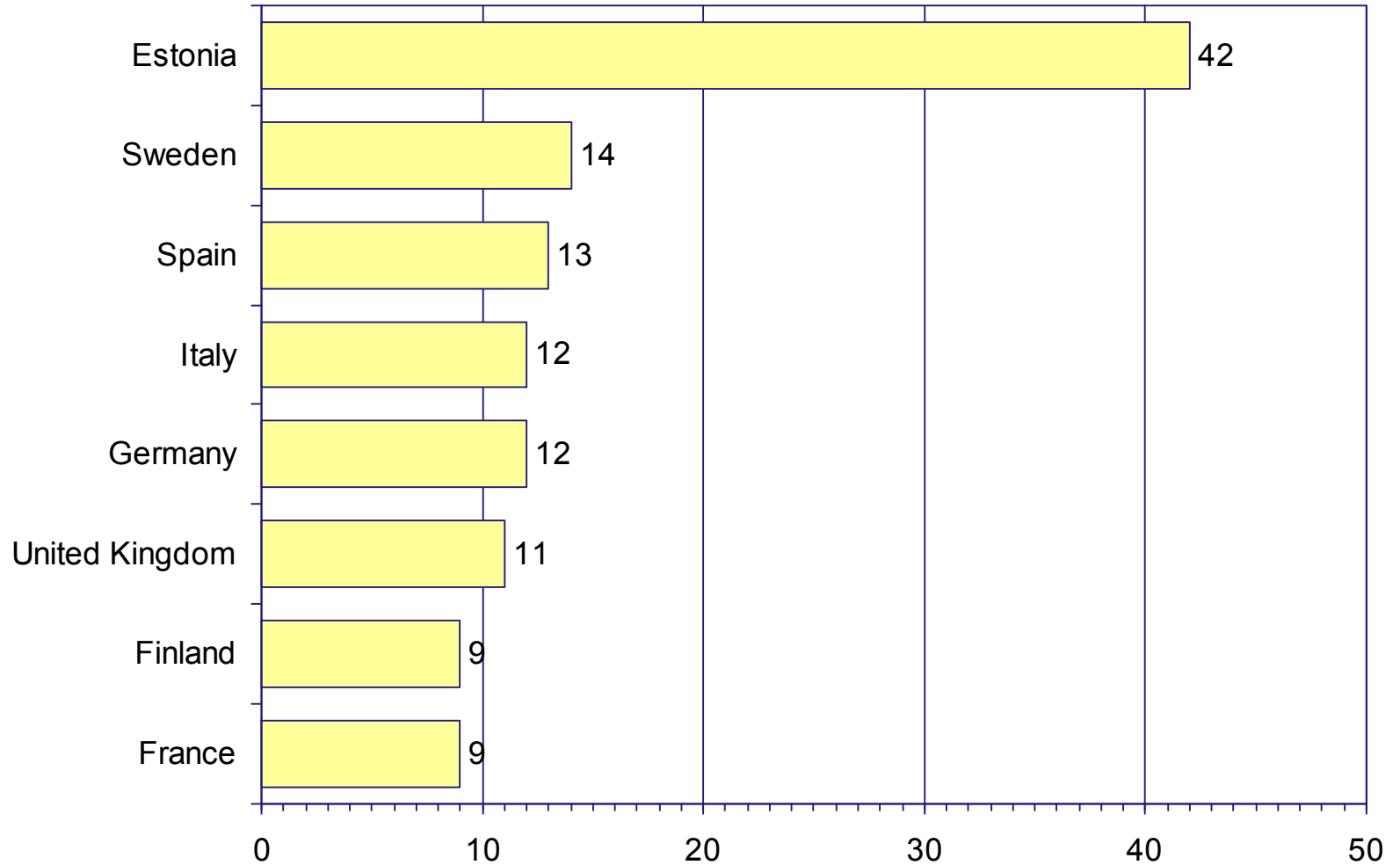




# THE DEVELOPMENT OF EXPORT IN CERTAIN EU-COUNTRIES 2011(1-11)

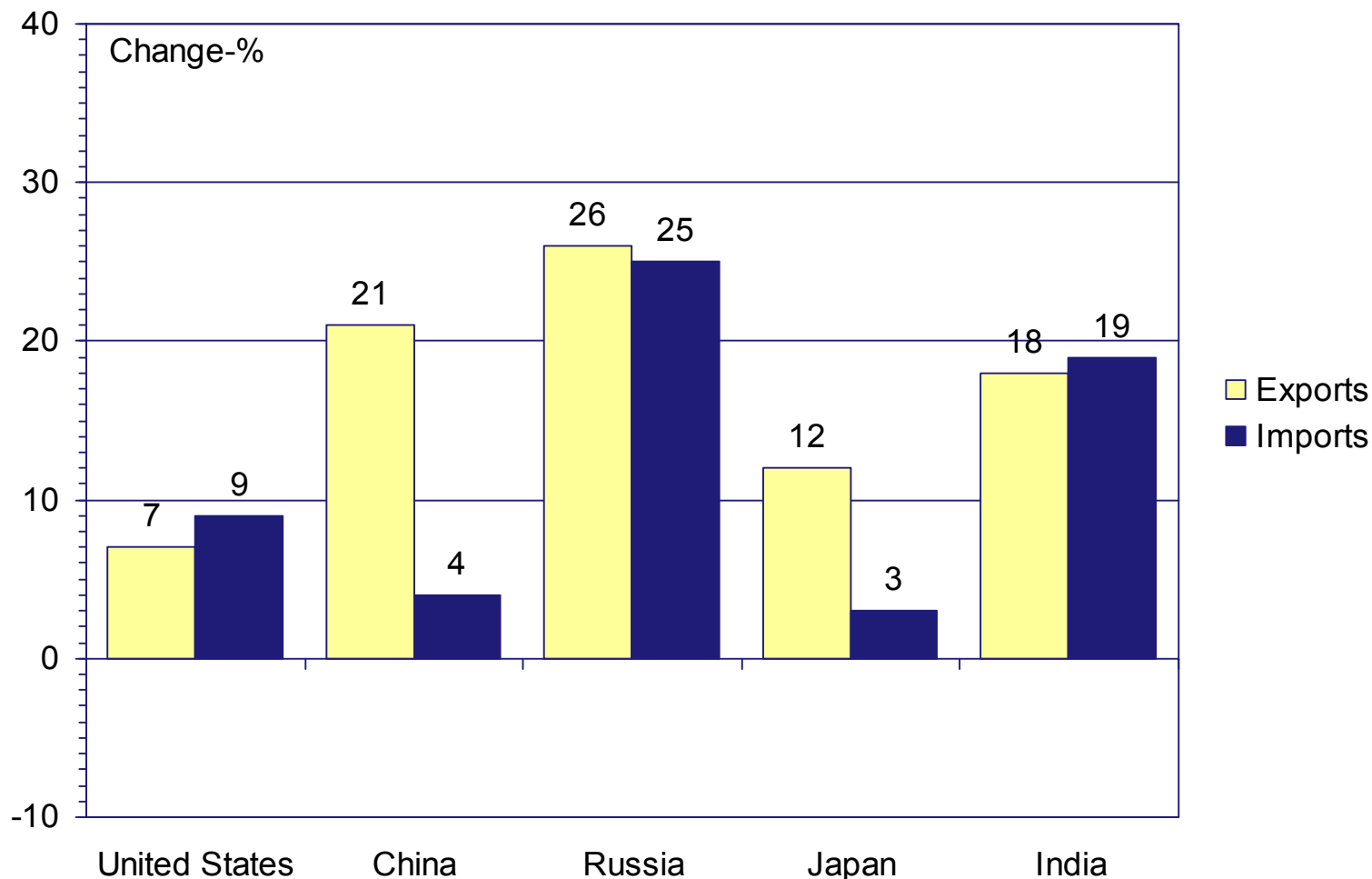
Change from previous year % (Source: Eurostat)





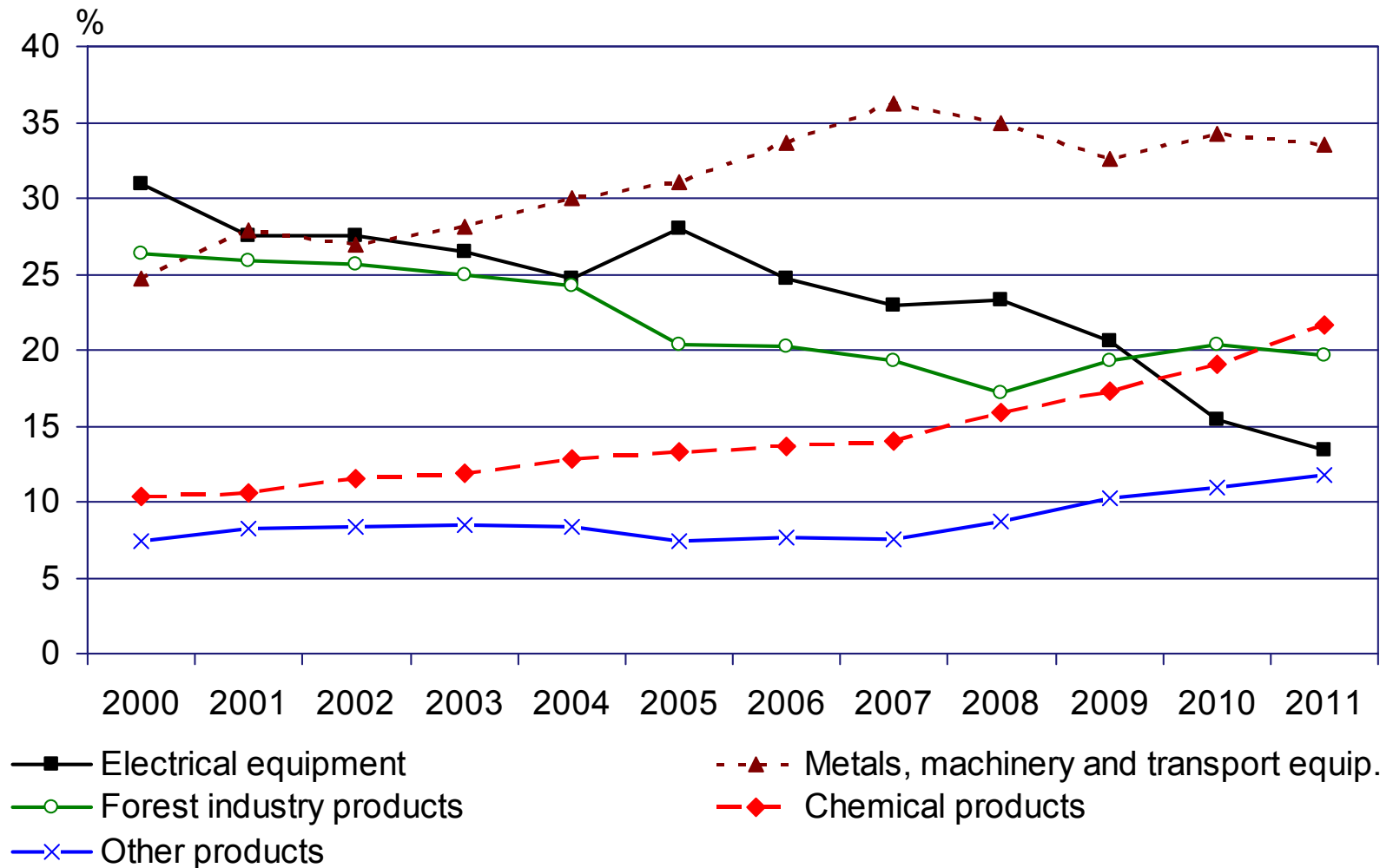
# THE DEVELOPMENT OF THE TRADE OF EU COUNTRIES WITH CERTAIN TRADING PARTNERS 2011(1-11)

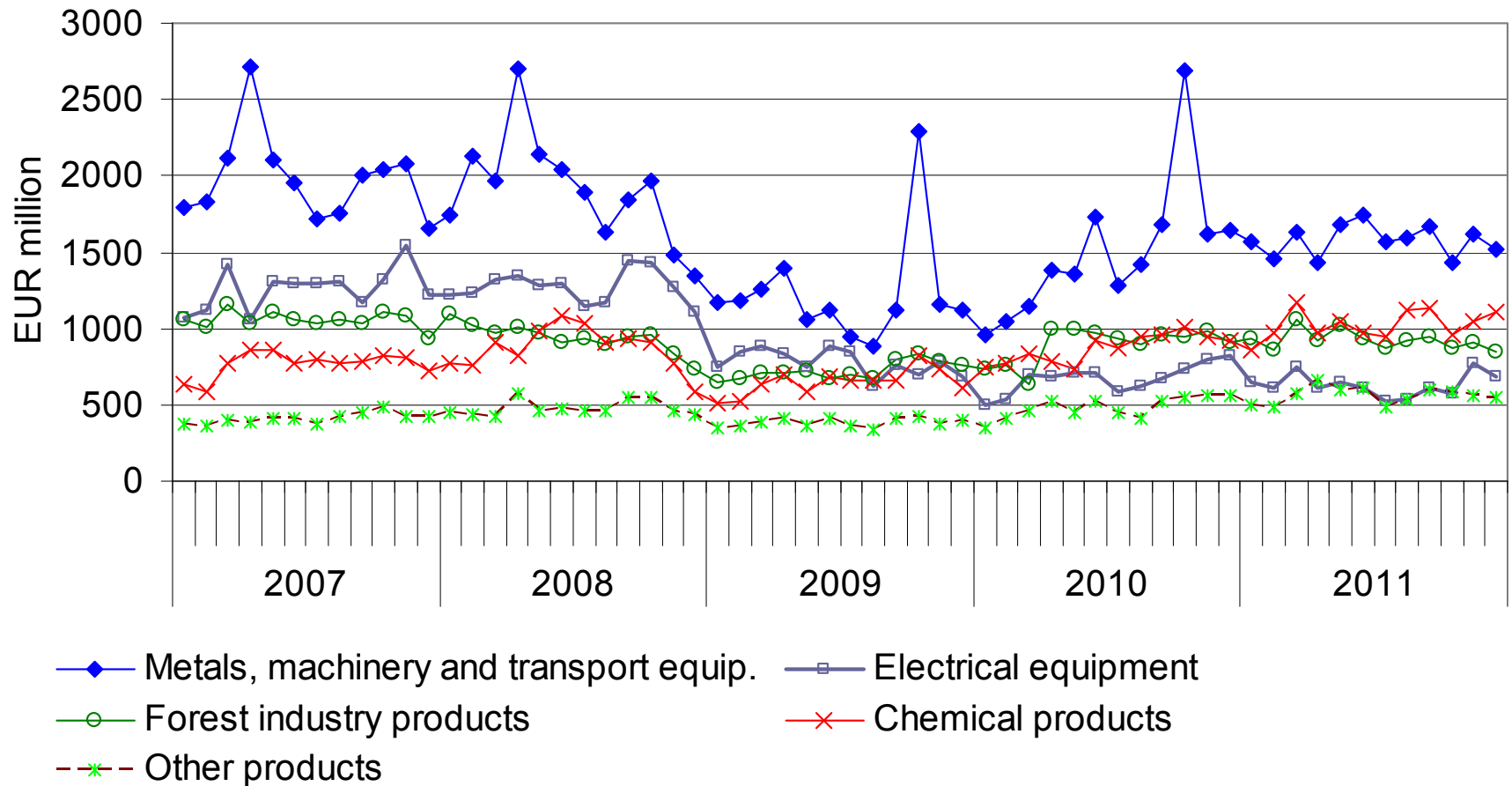
Change from previous year % (Source: Eurostat)

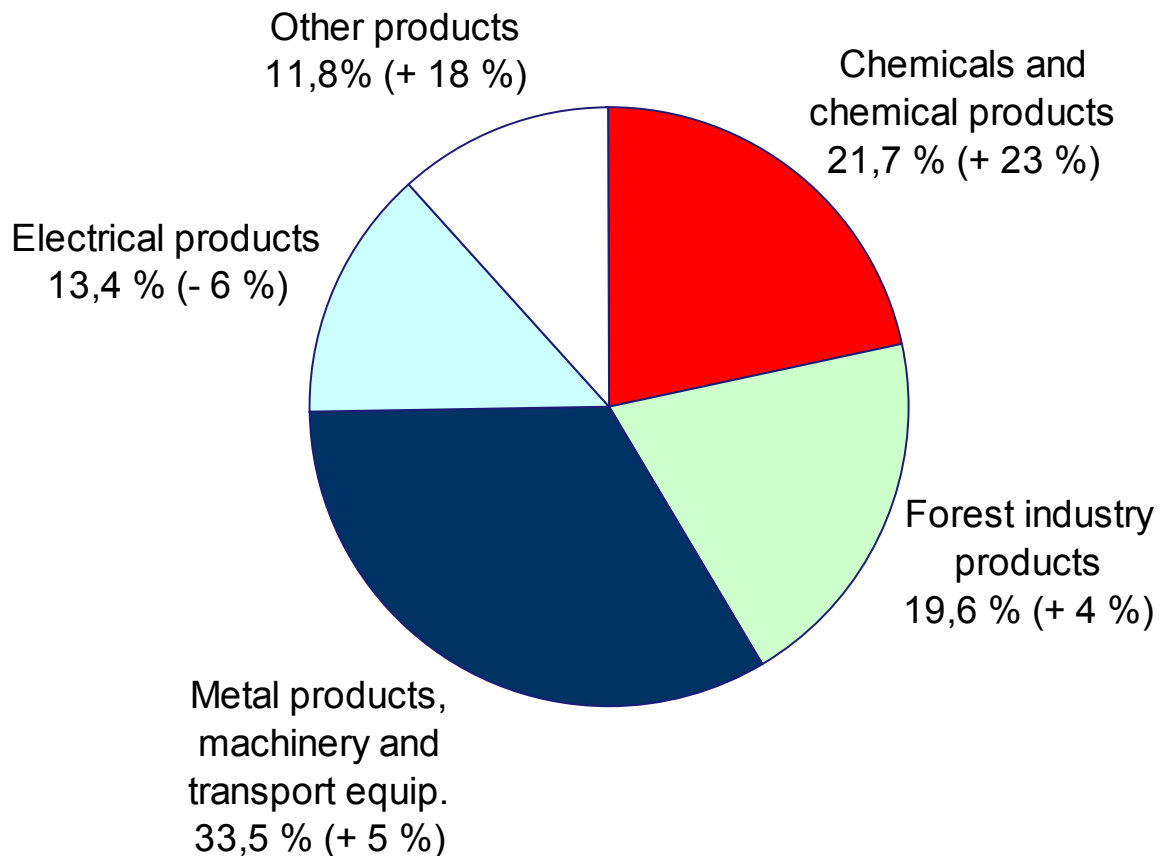




# THE PRODUCTS BY ACTIVITY (CPA) PROPORTION OF THE TOTAL EXPORT IN 2000-2011



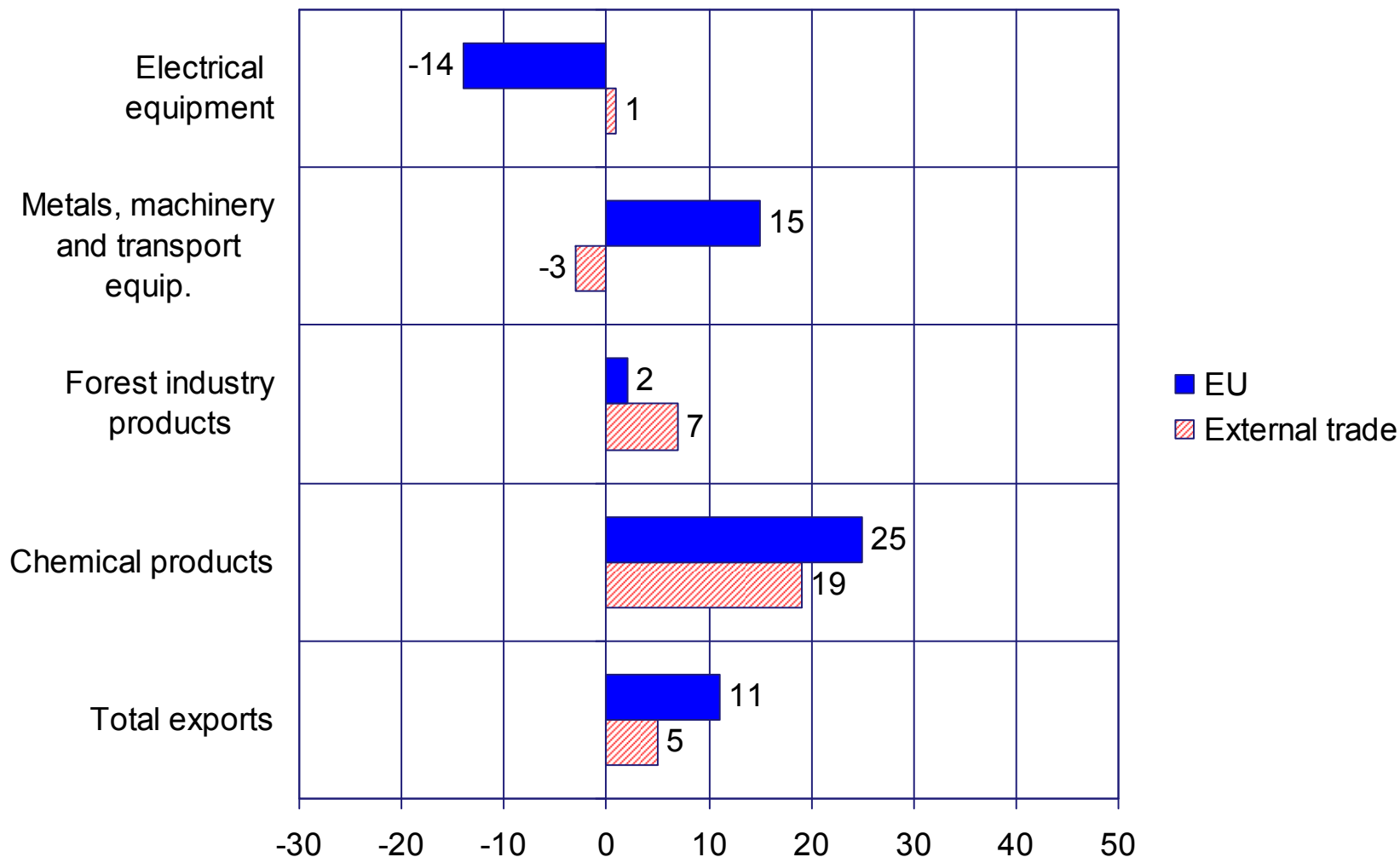


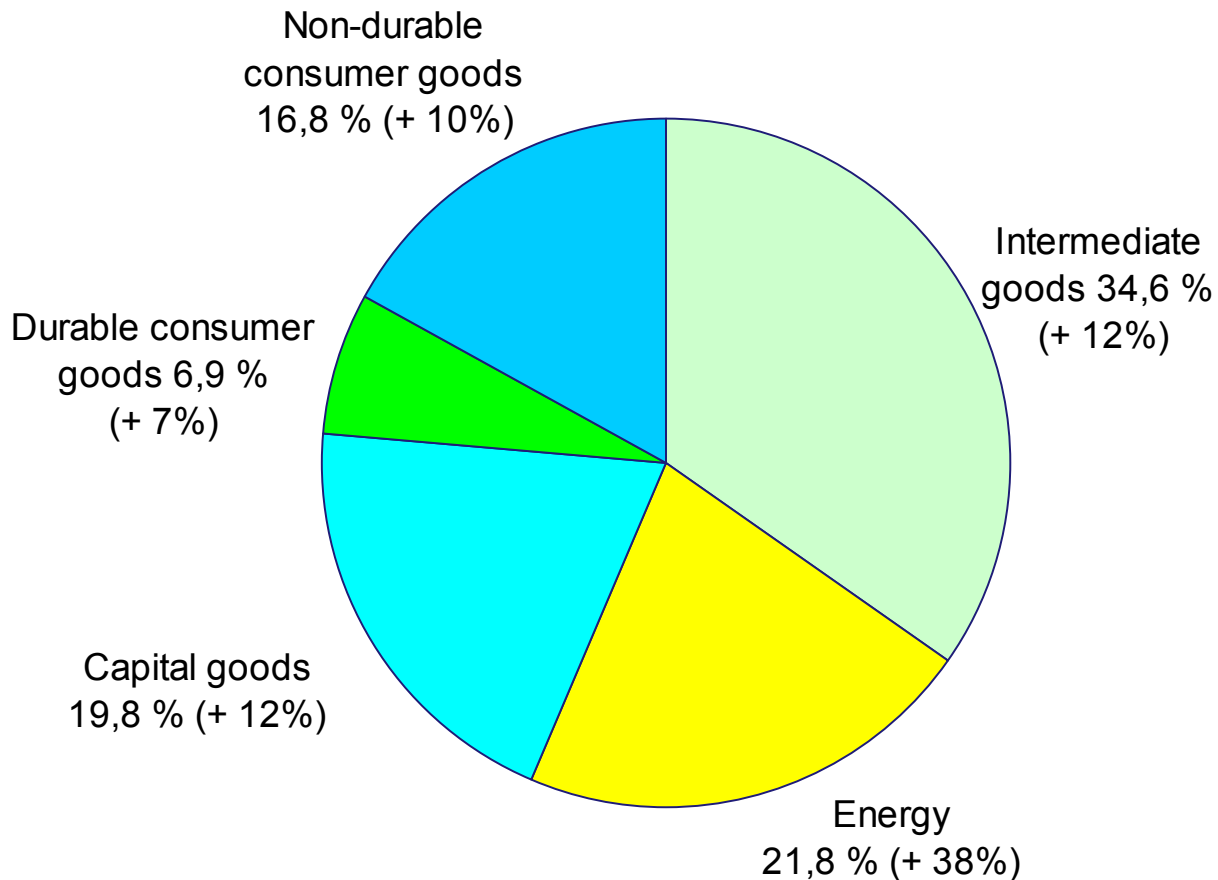




# EXPORTS IN 2011 TO EU AND TO COUNTRIES OUTSIDE EU BY PRODUCTS BY ACTIVITY (CPA)

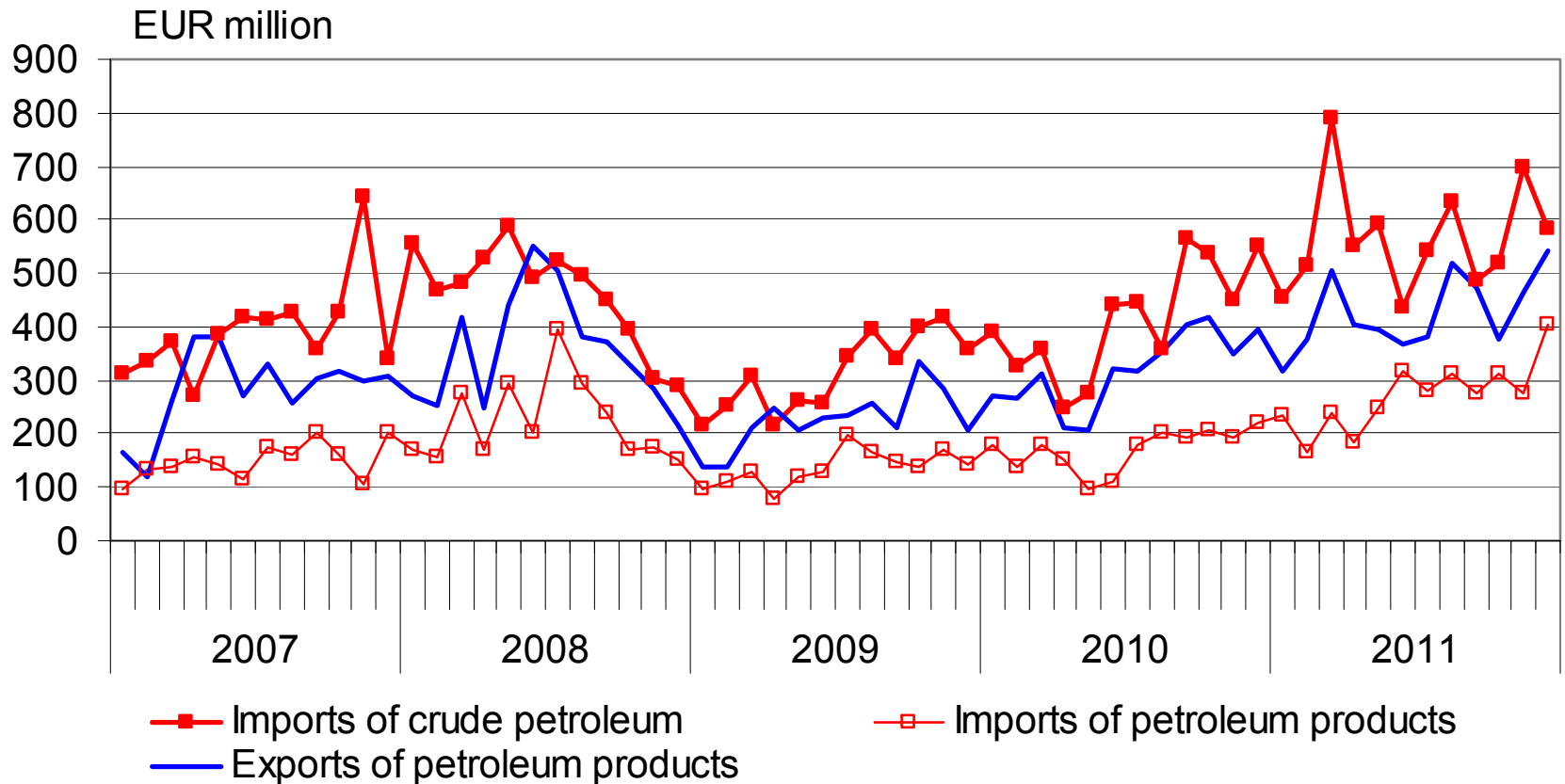
Change from previous year (%)

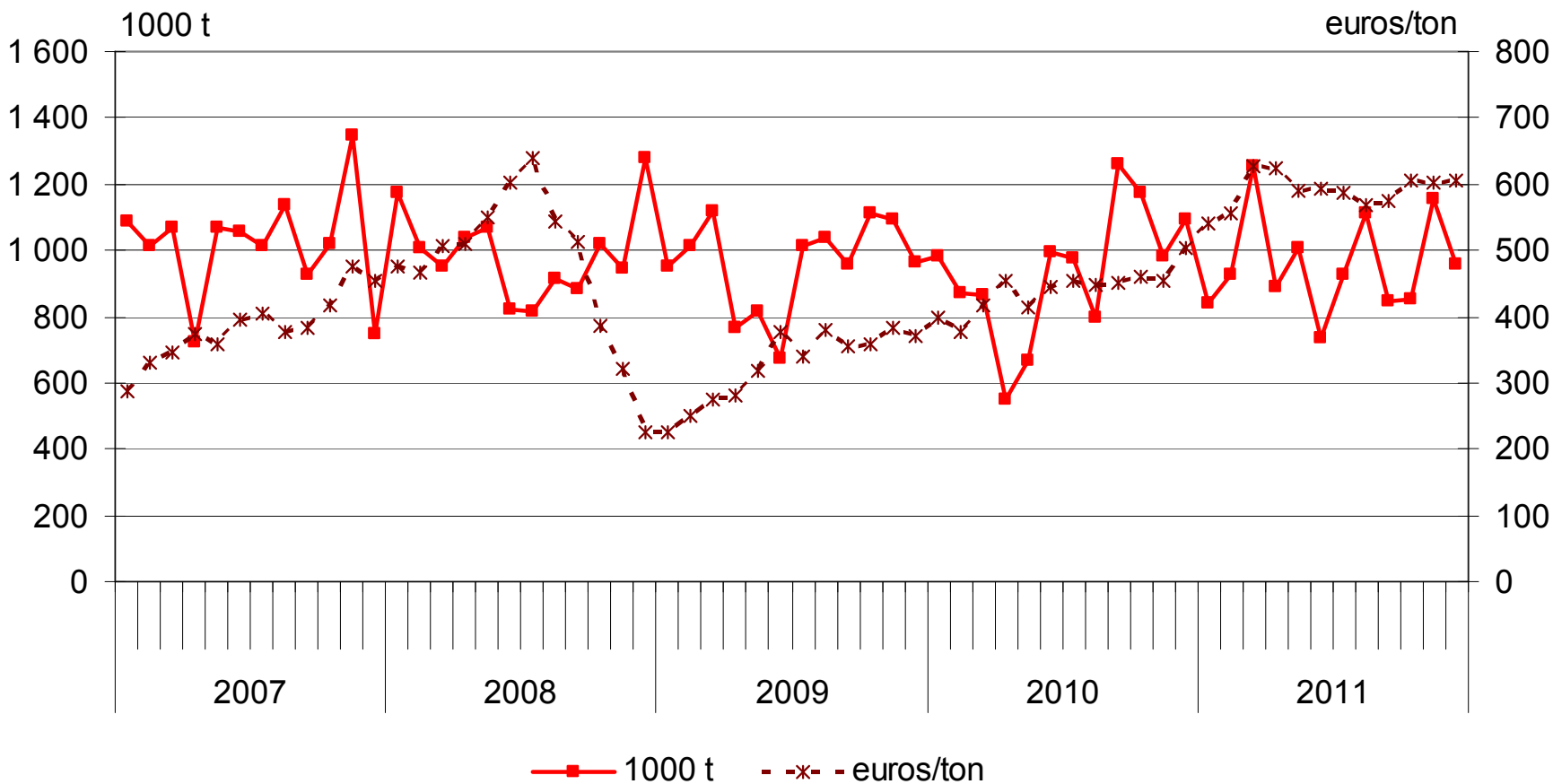


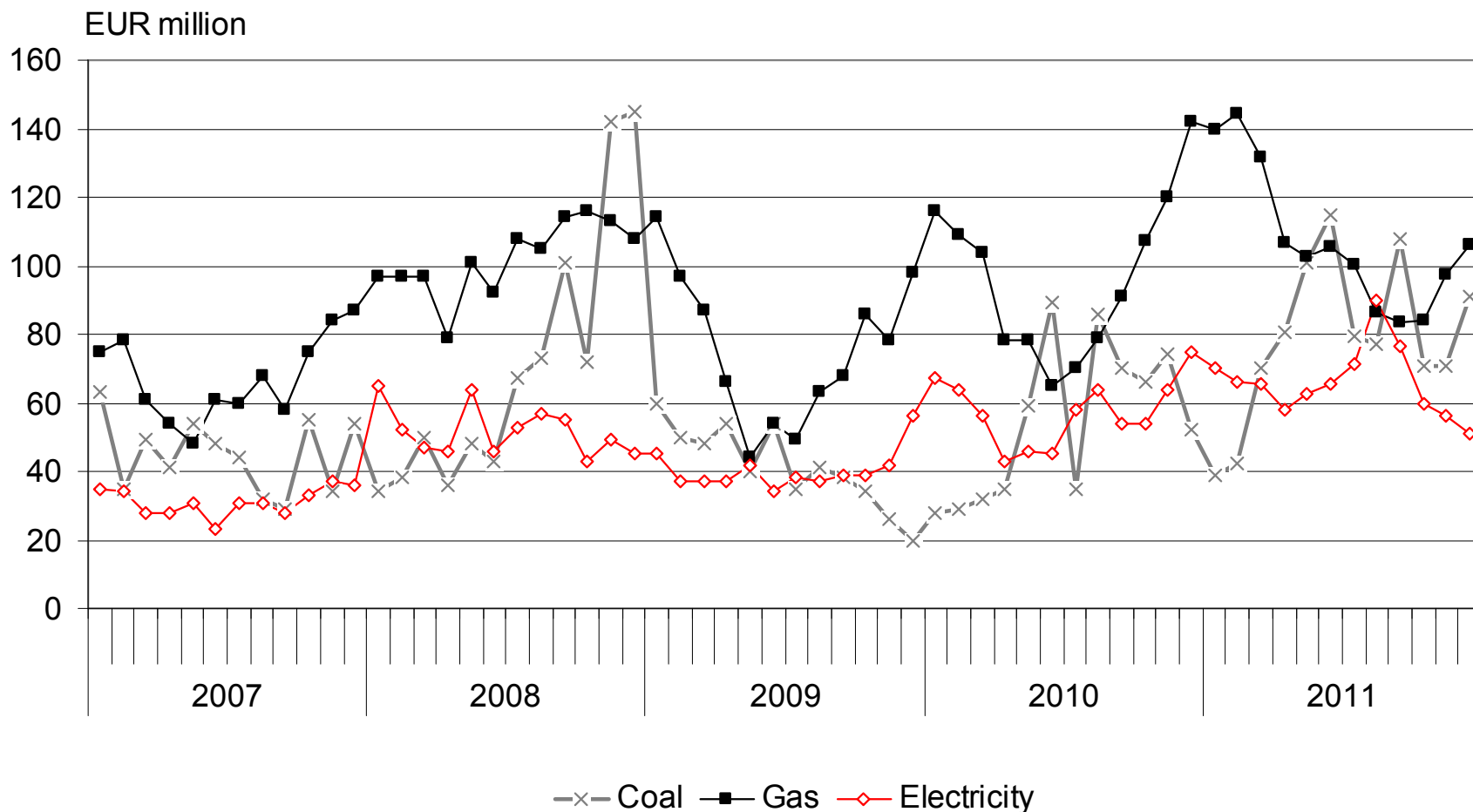




# MONTHLY IMPORTS OF CRUDE PETROLEUM AND PETROLEUM PRODUCTS AND EXPORTS OF PETROLEUM PRODUCTS 2007-2011; EUR million; (SITC 333, 334, 335)

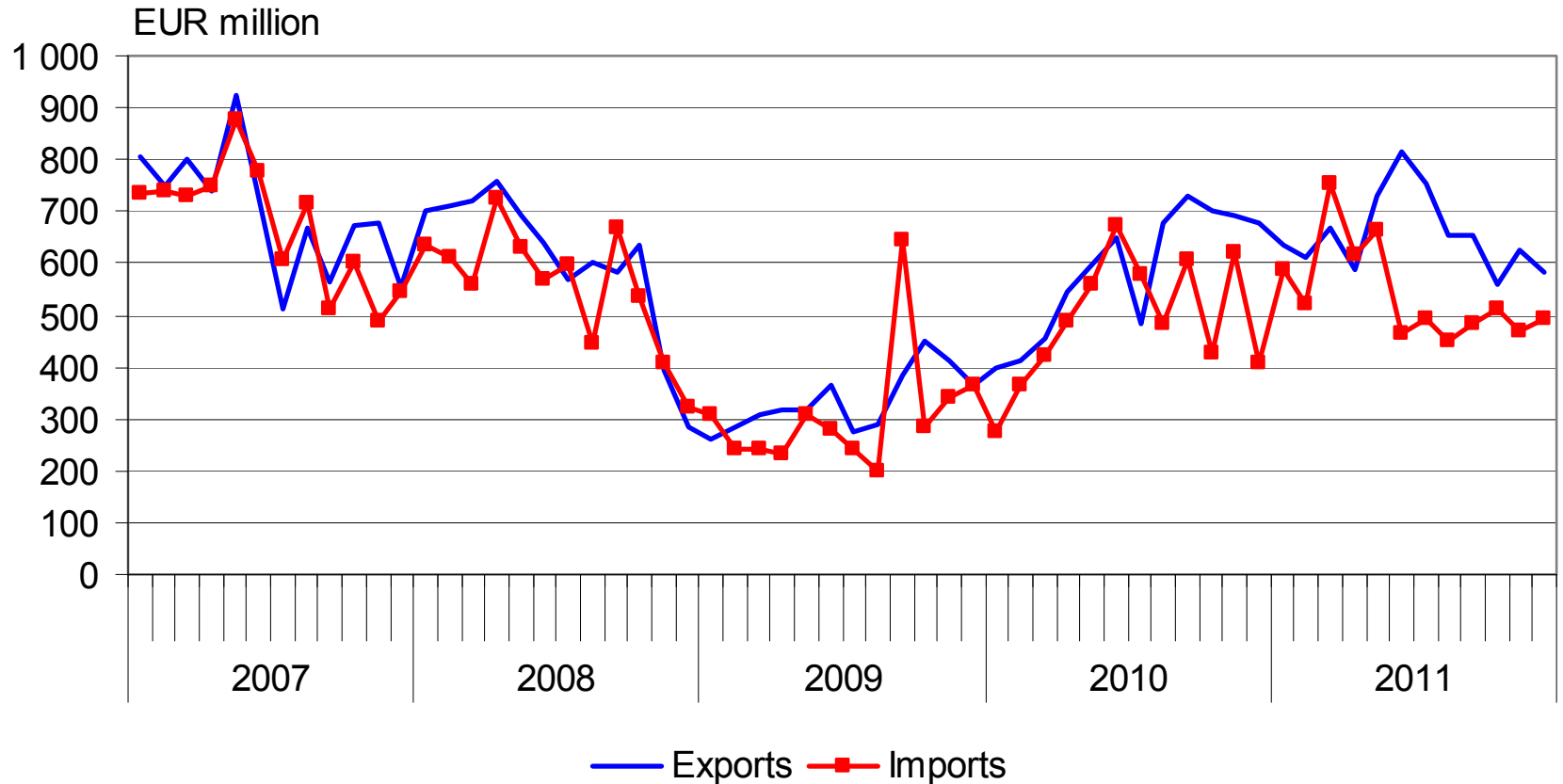


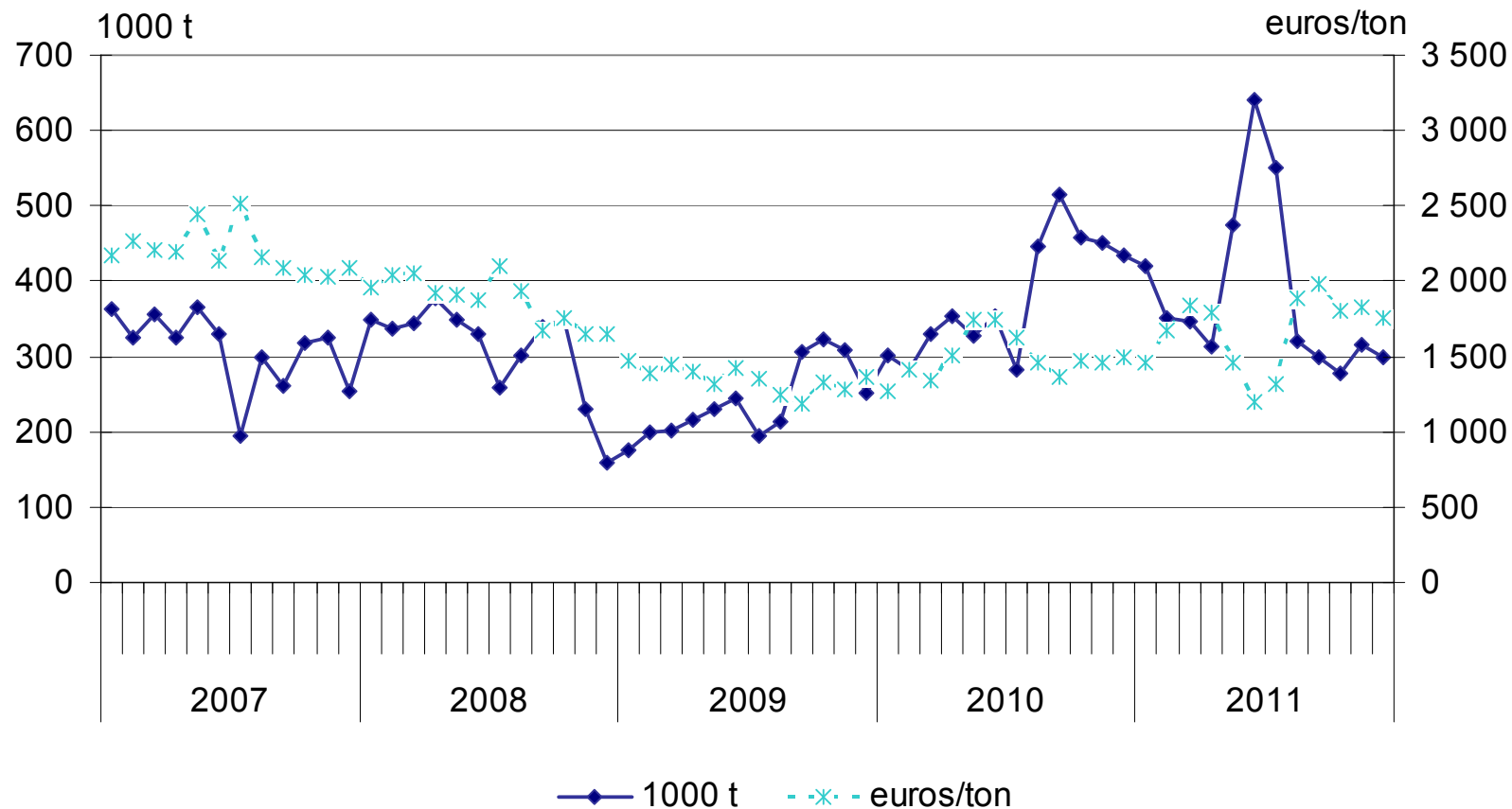


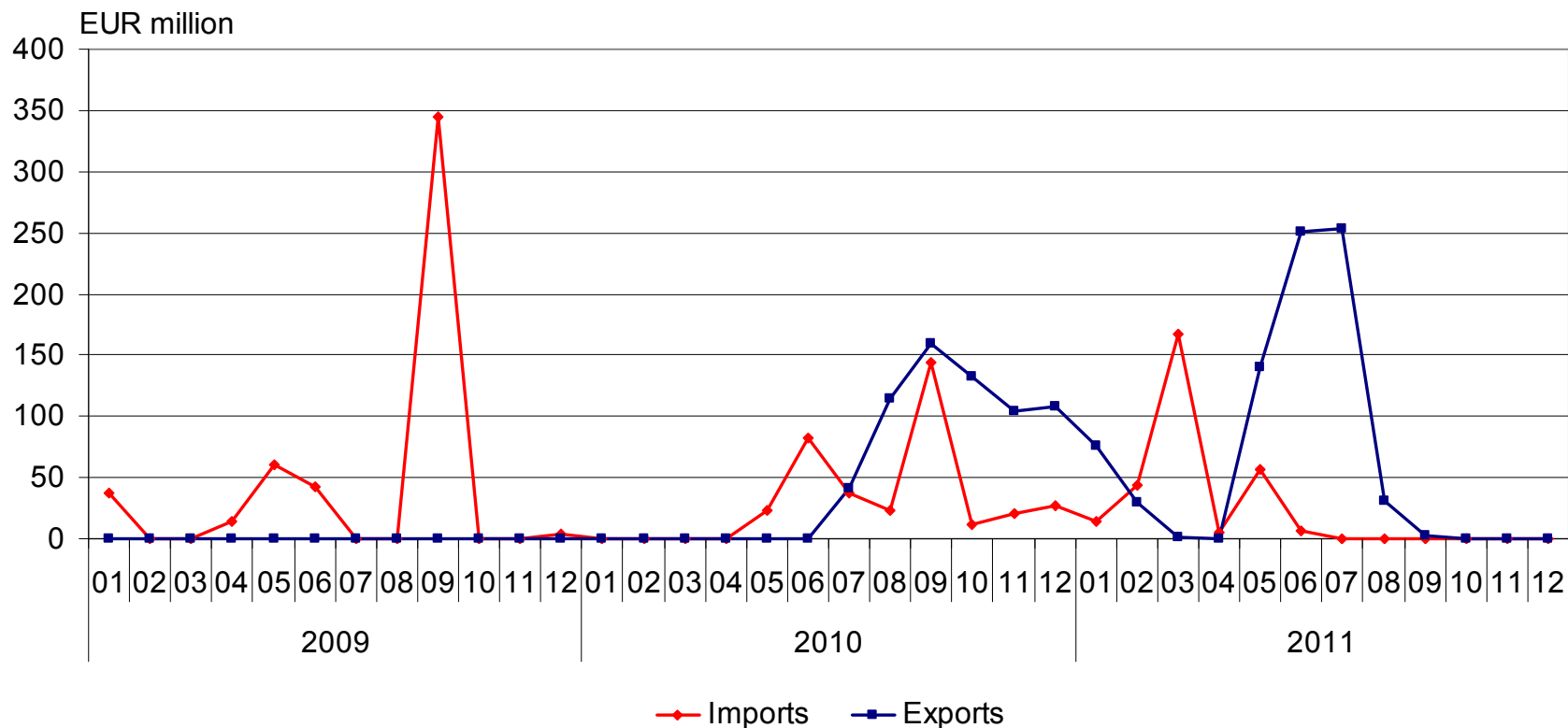




# MONTHLY IMPORTS AND EXPORTS OF ORES AND METALS 2007-2011; EUR million; (SITC 28,67,68)





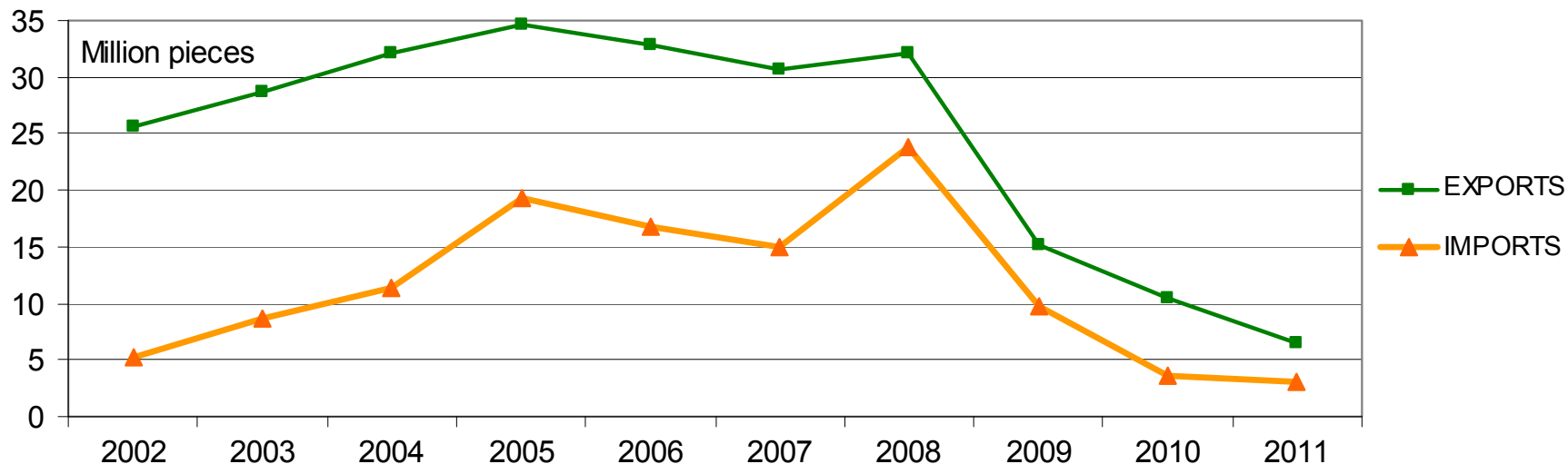


Total value of imports in 2009-2011 was 1 165 EUR million

Total value of exports in 2009-2011 was 1 442 EUR million



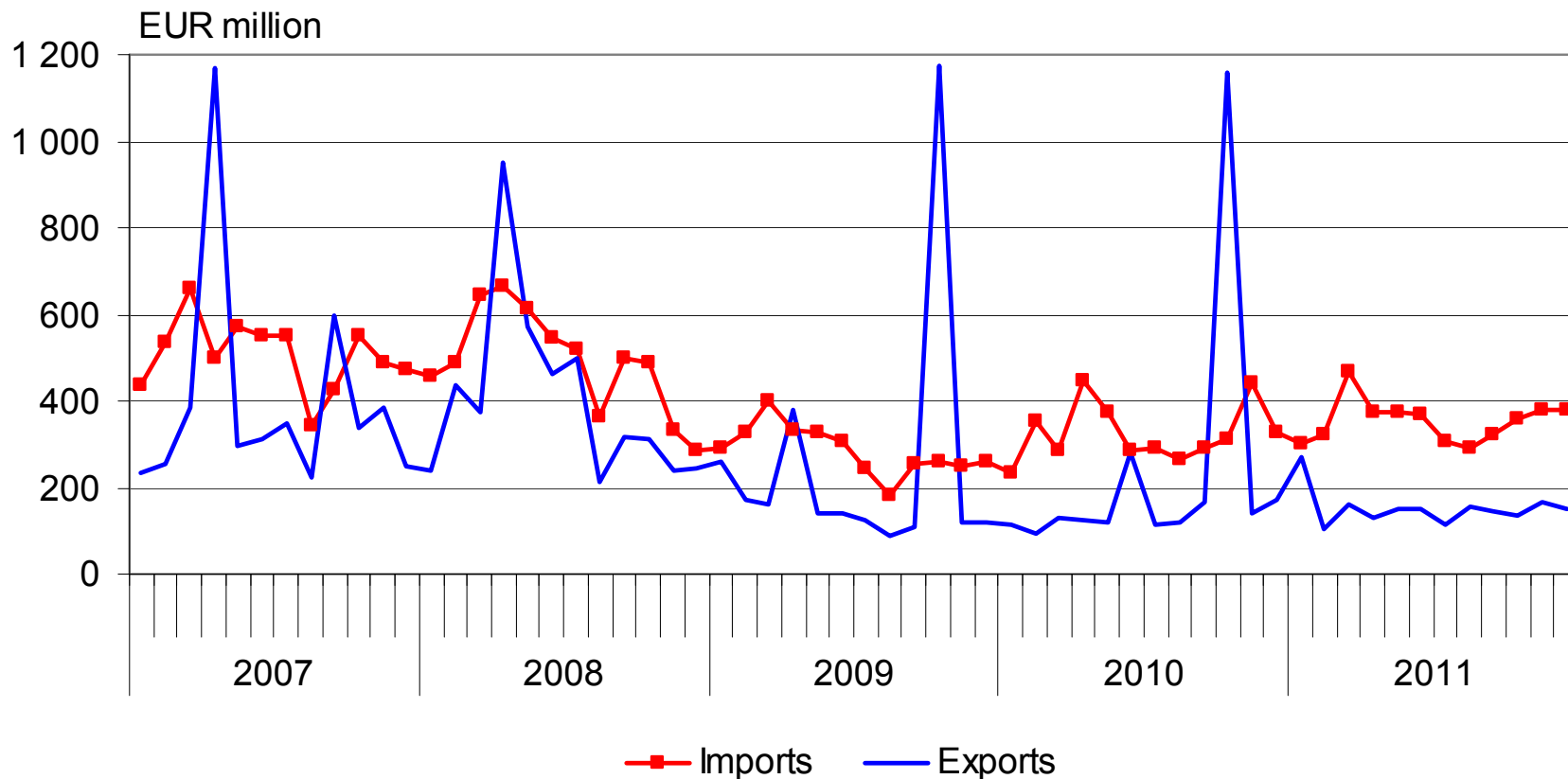
# EXPORTS AND IMPORTS OF MOBILE PHONES 2002-2011 (million pieces)



|      | Exports |                | Imports |                |
|------|---------|----------------|---------|----------------|
|      | Bn euro | million pieces | Bn euro | million pieces |
| 2002 | 5,1     | 25,7           | 0,4     | 5,2            |
| 2003 | 5,0     | 28,7           | 0,4     | 8,7            |
| 2004 | 4,4     | 32,1           | 0,5     | 11,3           |
| 2005 | 6,6     | 34,6           | 1,3     | 19,3           |
| 2006 | 6,7     | 32,9           | 1,4     | 16,7           |
| 2007 | 6,9     | 30,7           | 1,3     | 14,9           |
| 2008 | 6,5     | 32,1           | 2,2     | 23,8           |
| 2009 | 2,8     | 15,2           | 1,0     | 9,7            |
| 2010 | 1,8     | 10,5           | 0,4     | 3,6            |
| 2011 | 1,4     | 6,5            | 0,5     | 3,1            |

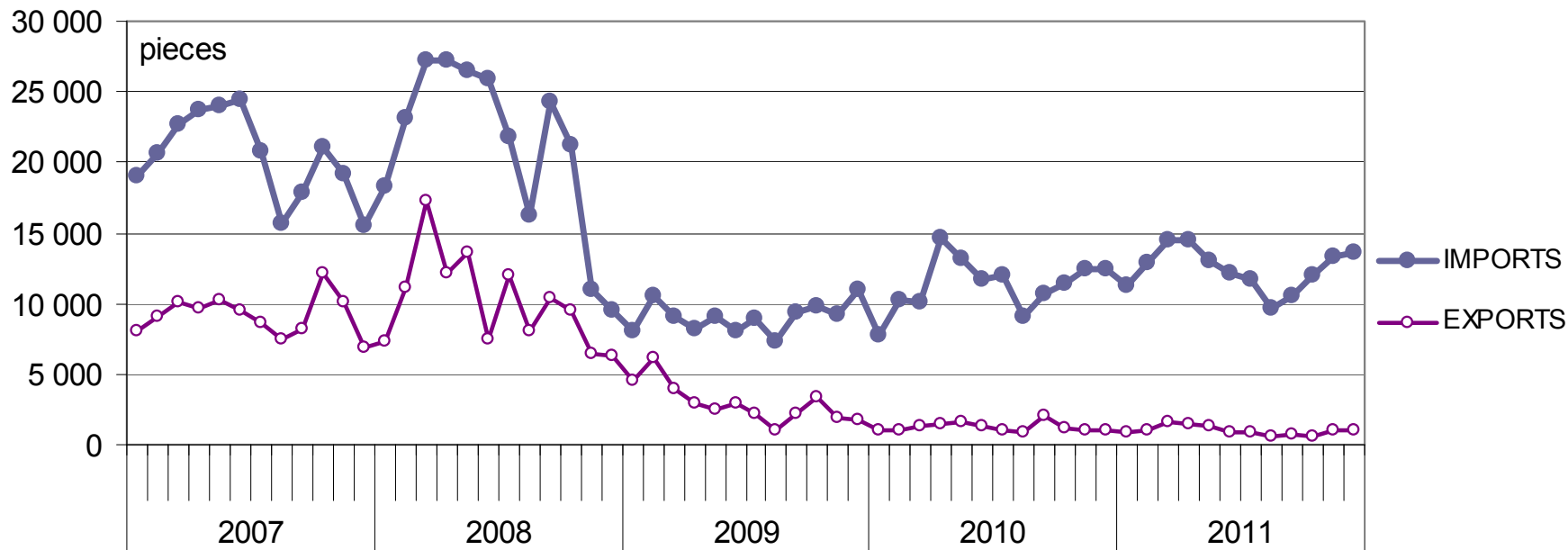


# MONTHLY IMPORTS AND EXPORTS OF TRANSPORT EQUIPMENT 2007-2011; EUR million; (SITC 78,79)





# MONTHLY IMPORTS AND EXPORTS OF CARS 2007-2011; pieces; (SITC 7812)

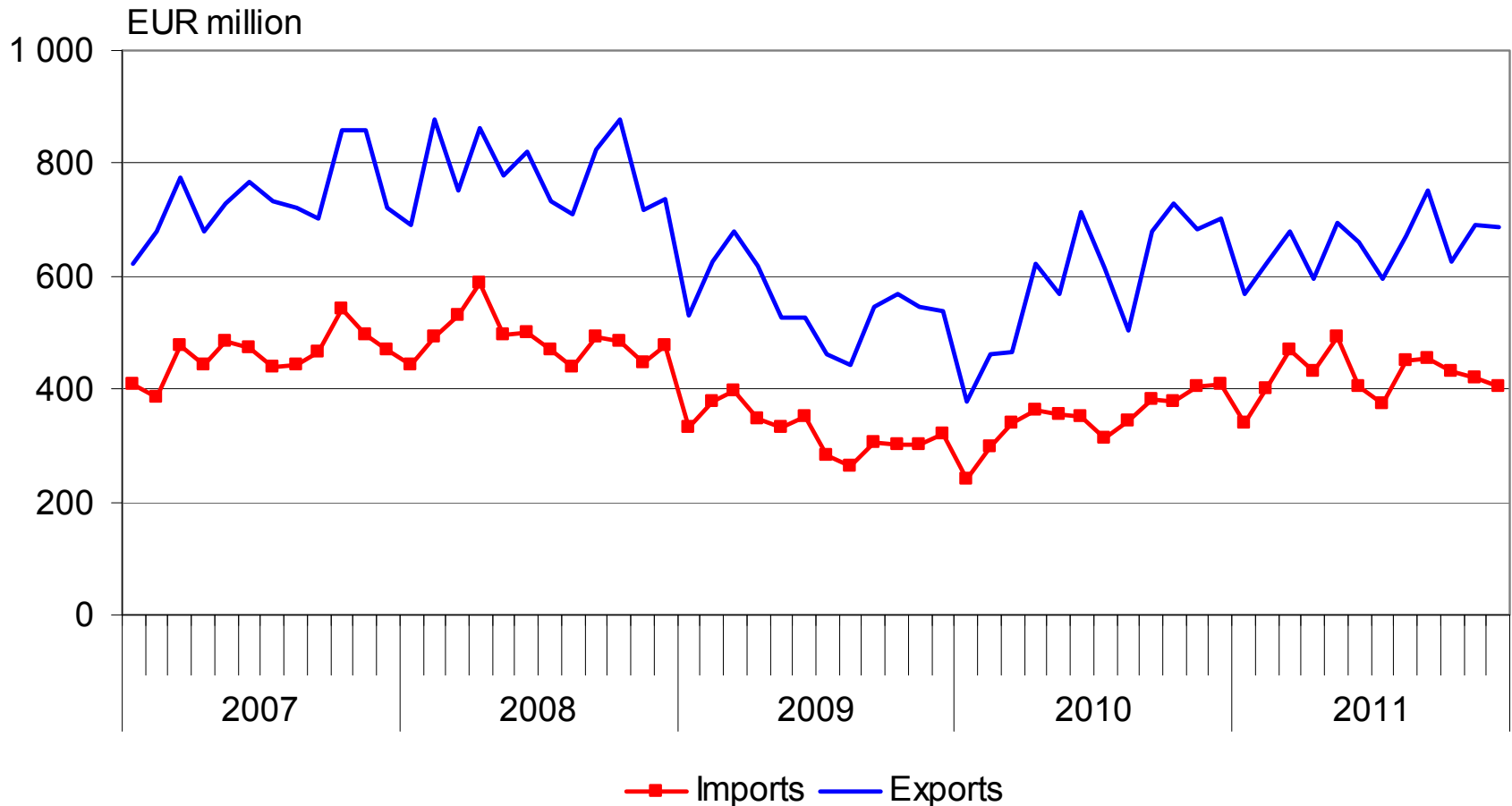


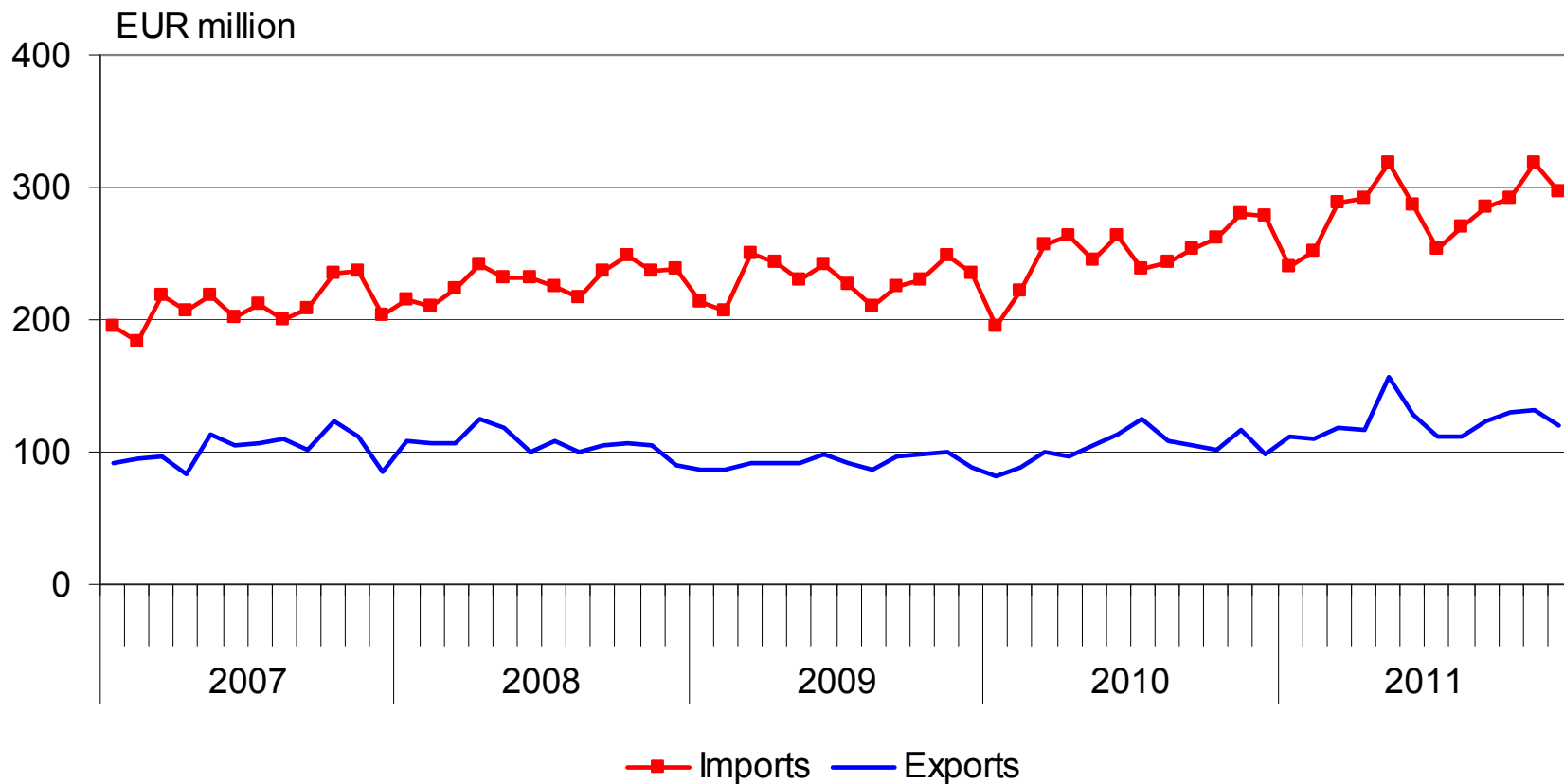
Imports and exports of cars (pieces)

|      | <u>imports</u> | <u>exports</u> |
|------|----------------|----------------|
| 2007 | 244 464        | 110 115        |
| 2008 | 252 424        | 121 503        |
| 2009 | 108 411        | 35 422         |
| 2010 | 135 537        | 14 764         |
| 2011 | 149 296        | 12 132         |



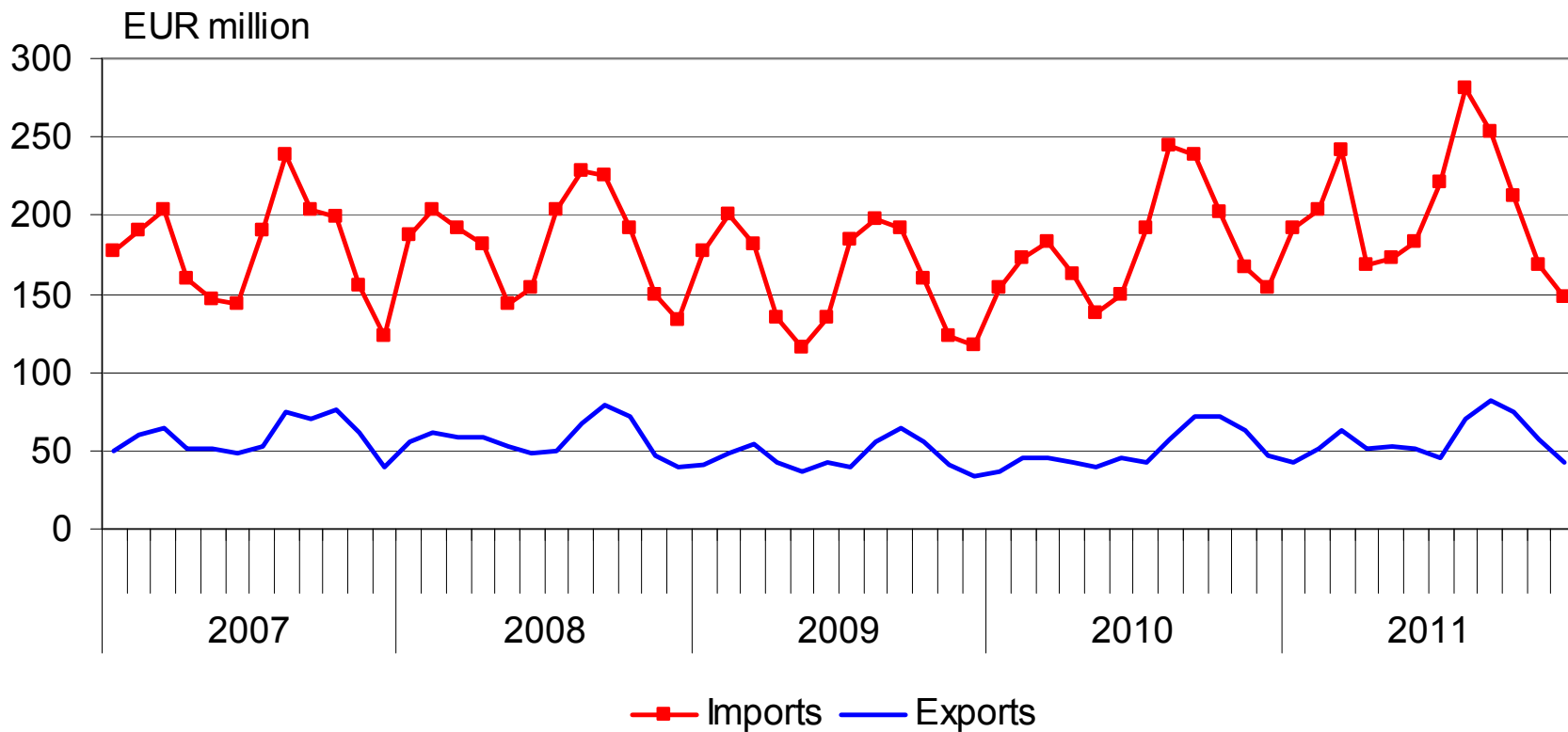
# MONTHLY IMPORTS AND EXPORTS OF MACHINERY AND EQUIPMENT 2007-2011; EUR million; (CPA 28)

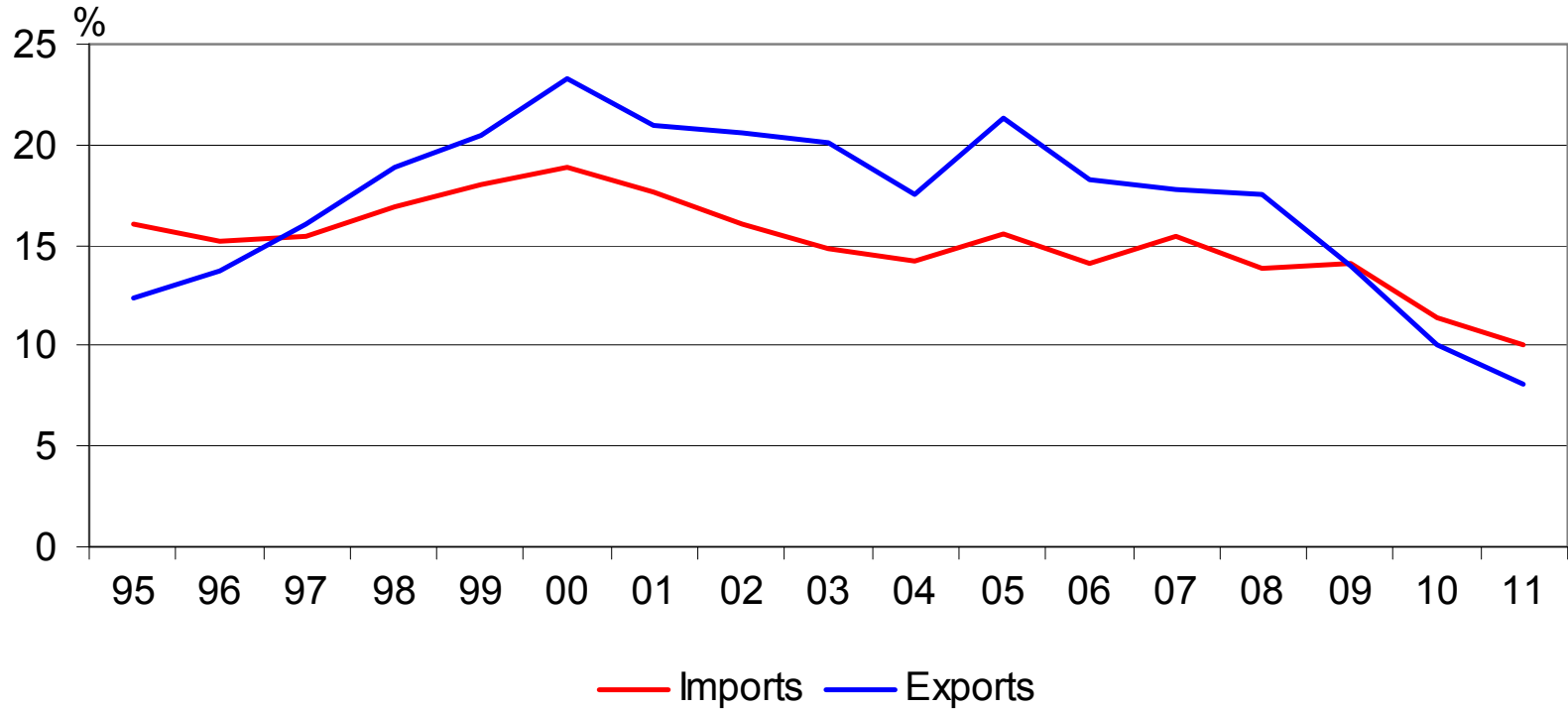


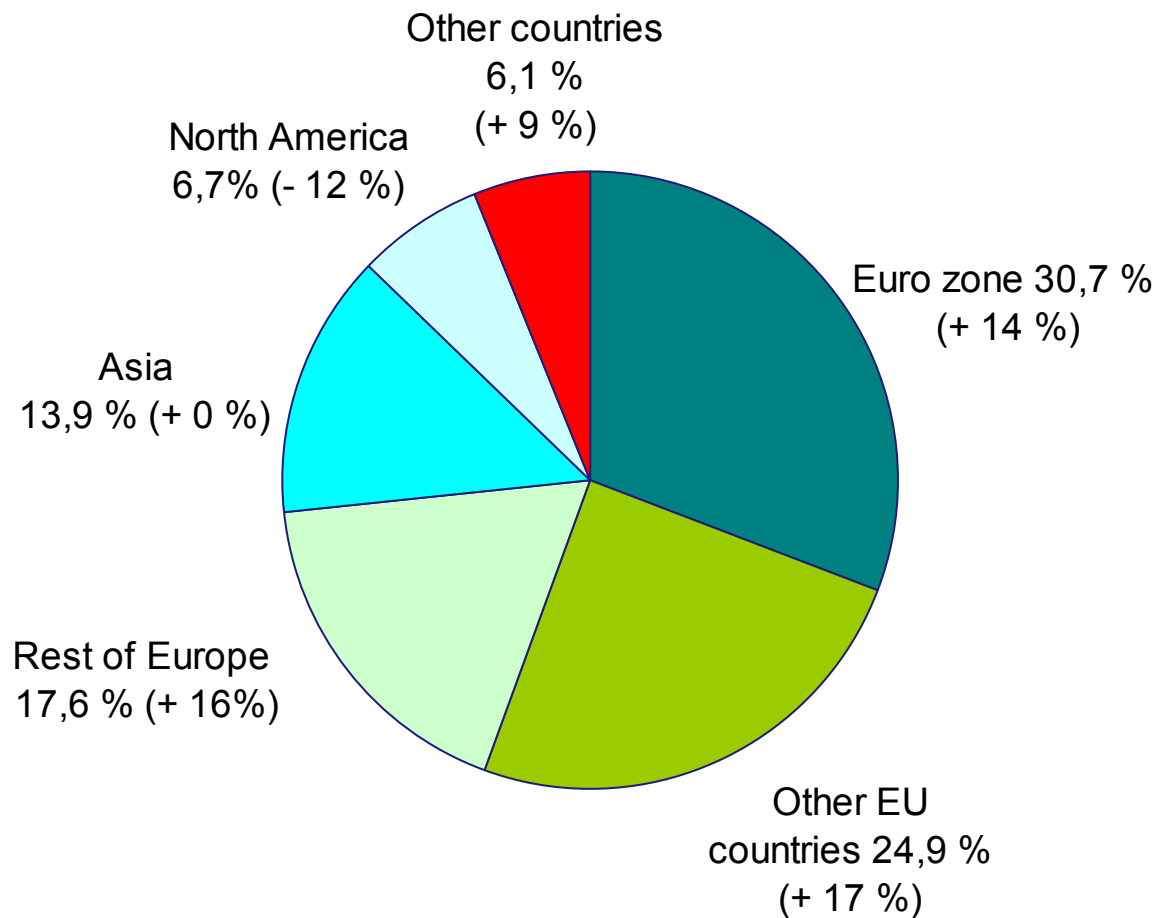


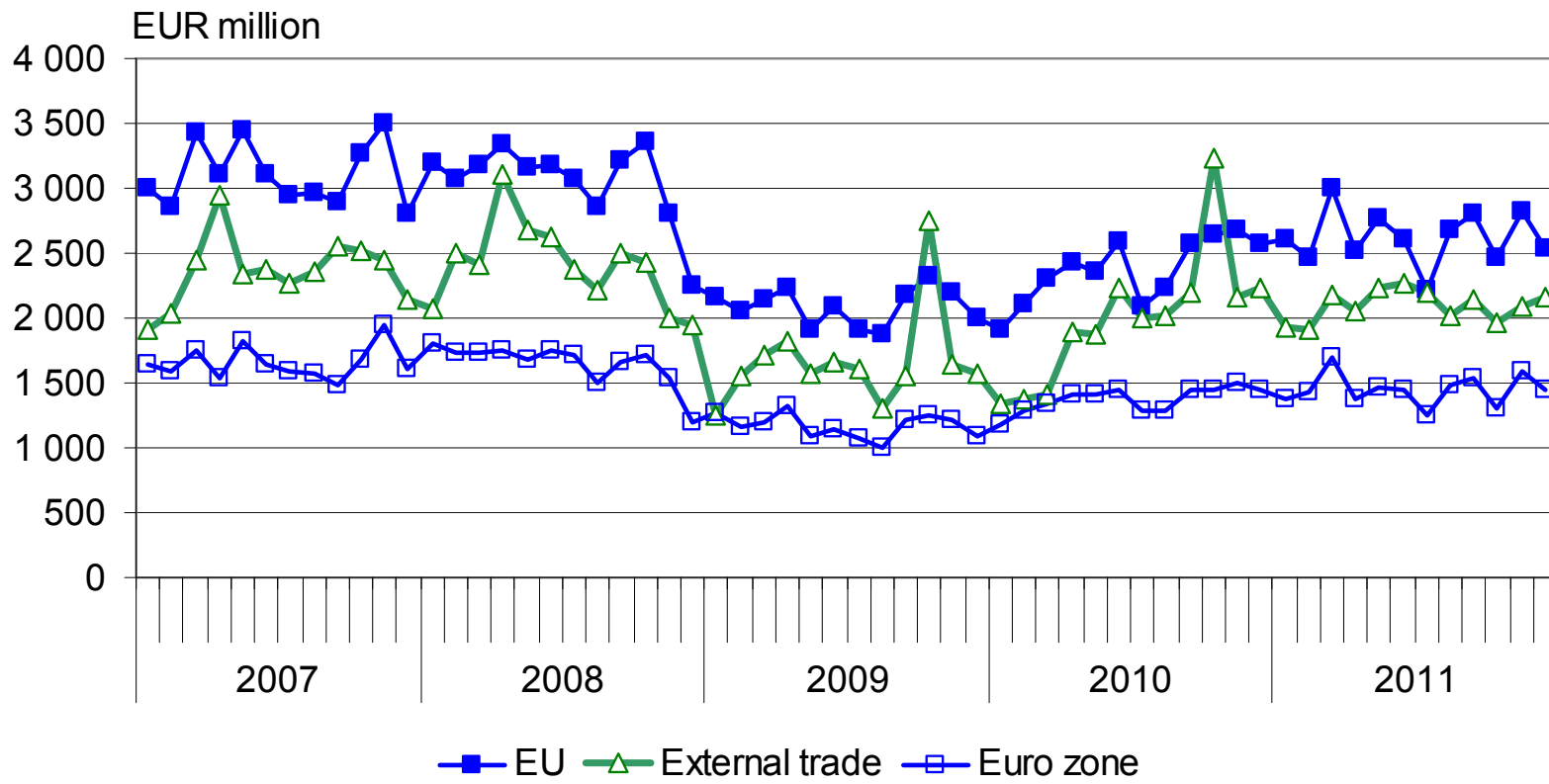


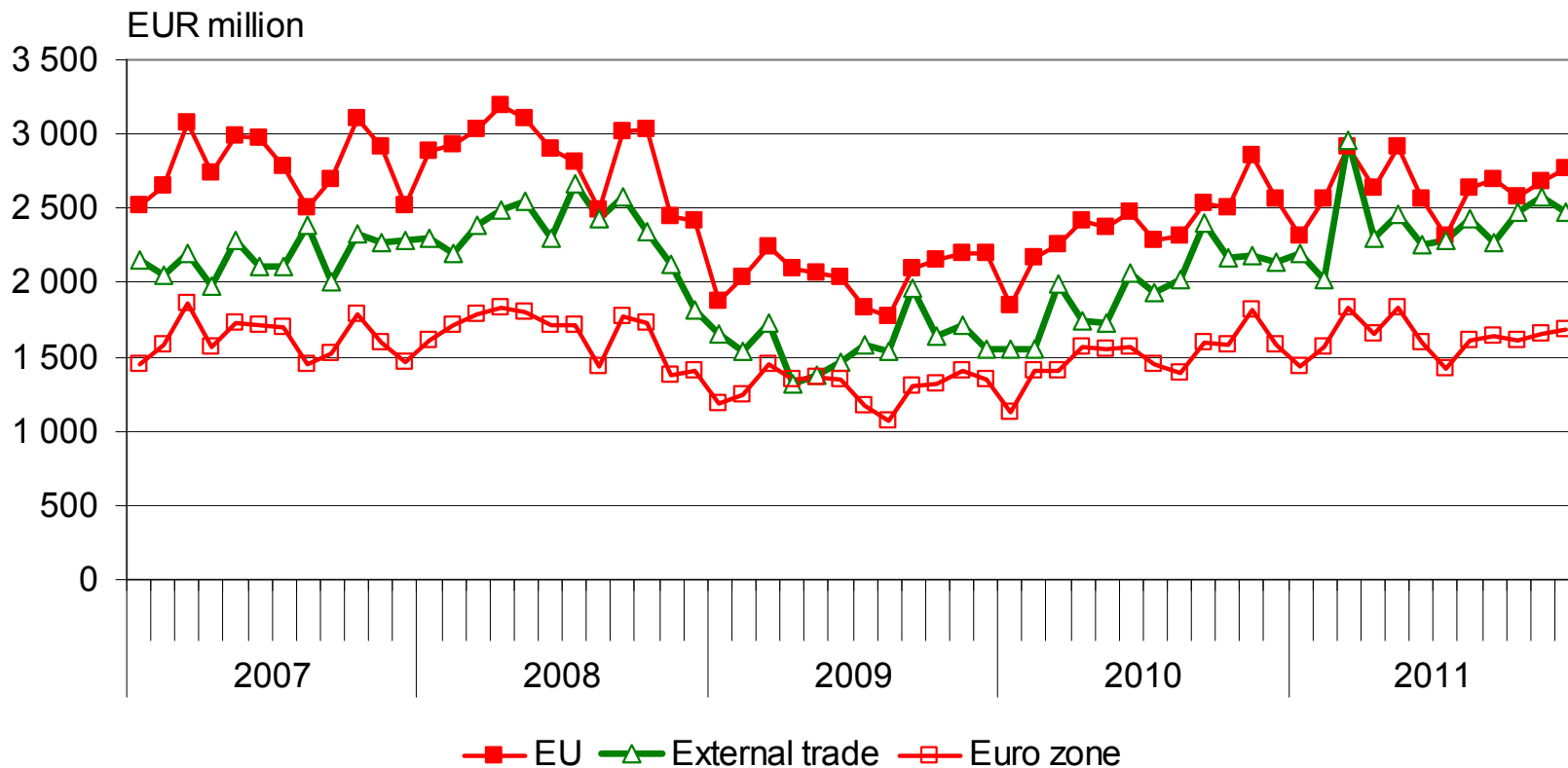
# MONTHLY IMPORTS AND EXPORTS OF TEXTILE, CLOTHES AND FOOTWEAR 2007-2011; EUR million; (SITC 65,84,85)

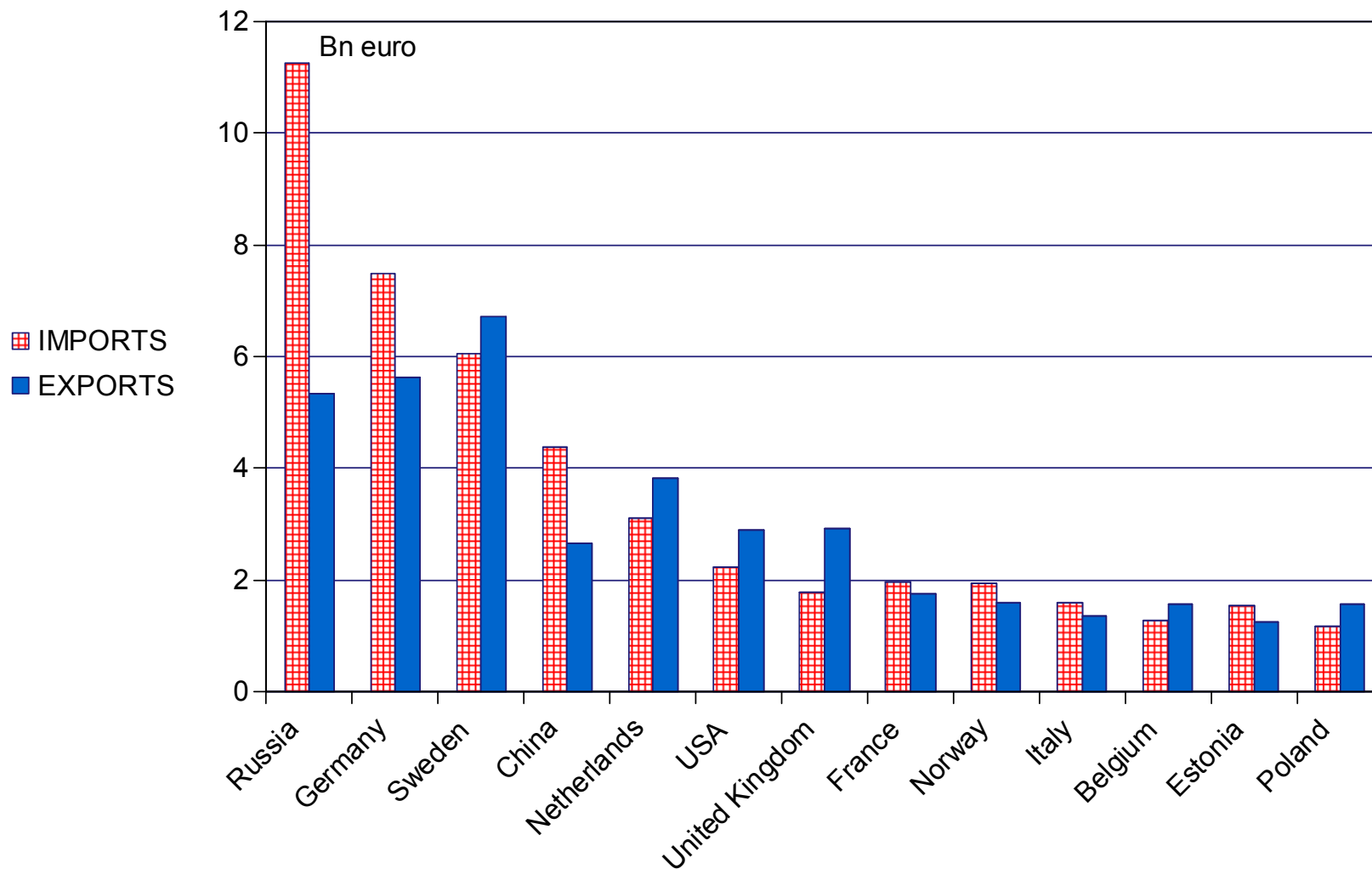


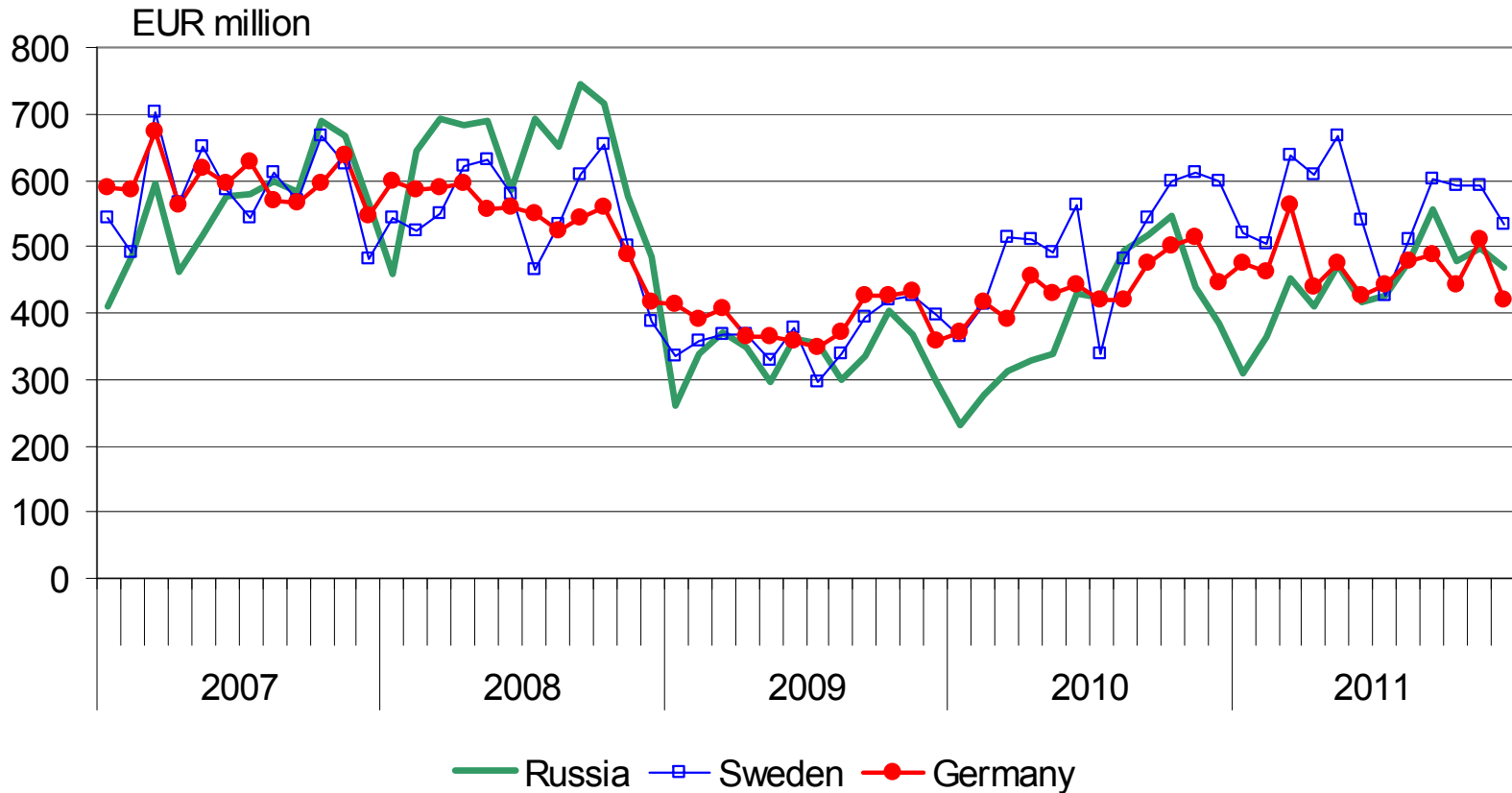


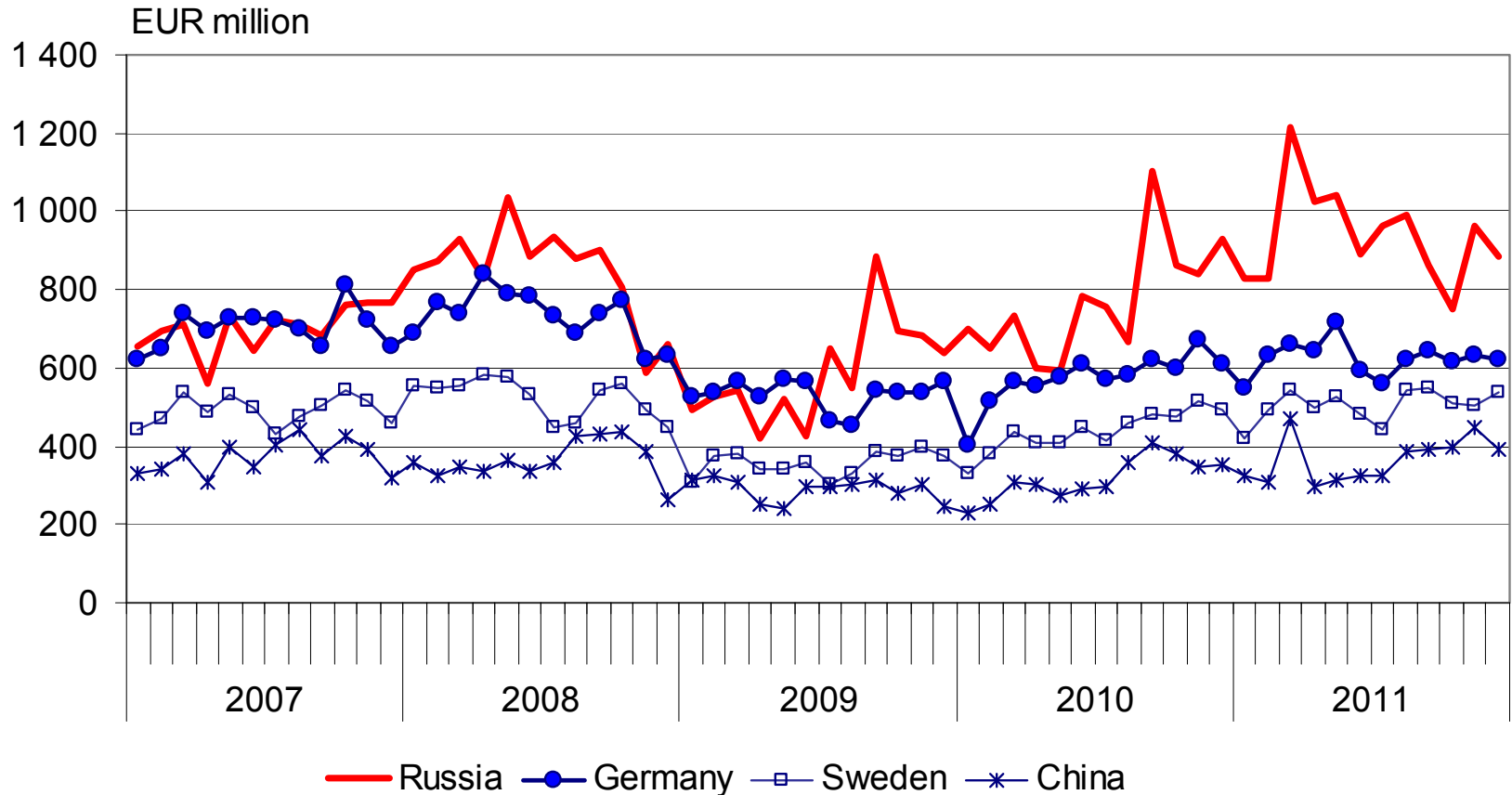


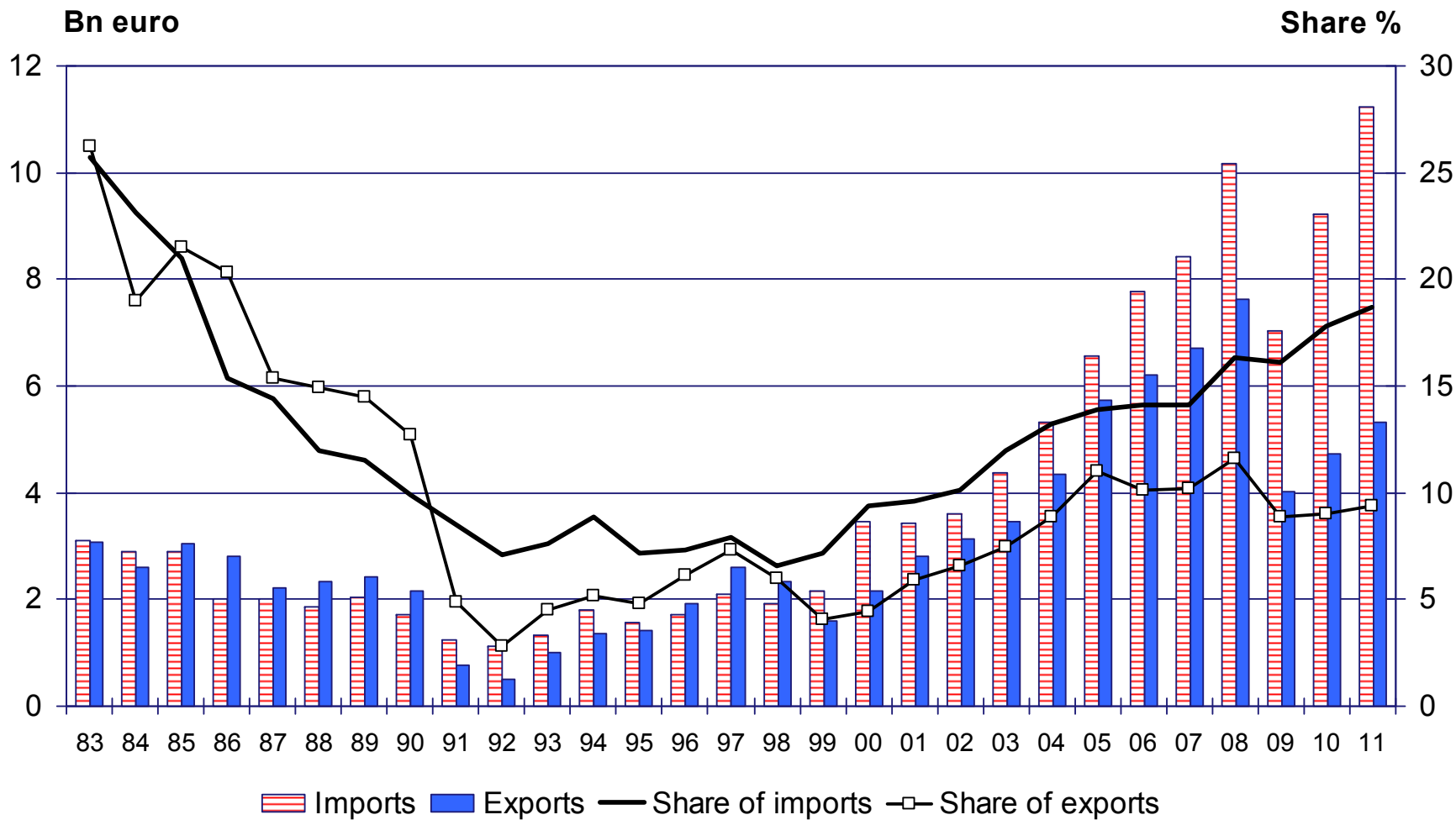








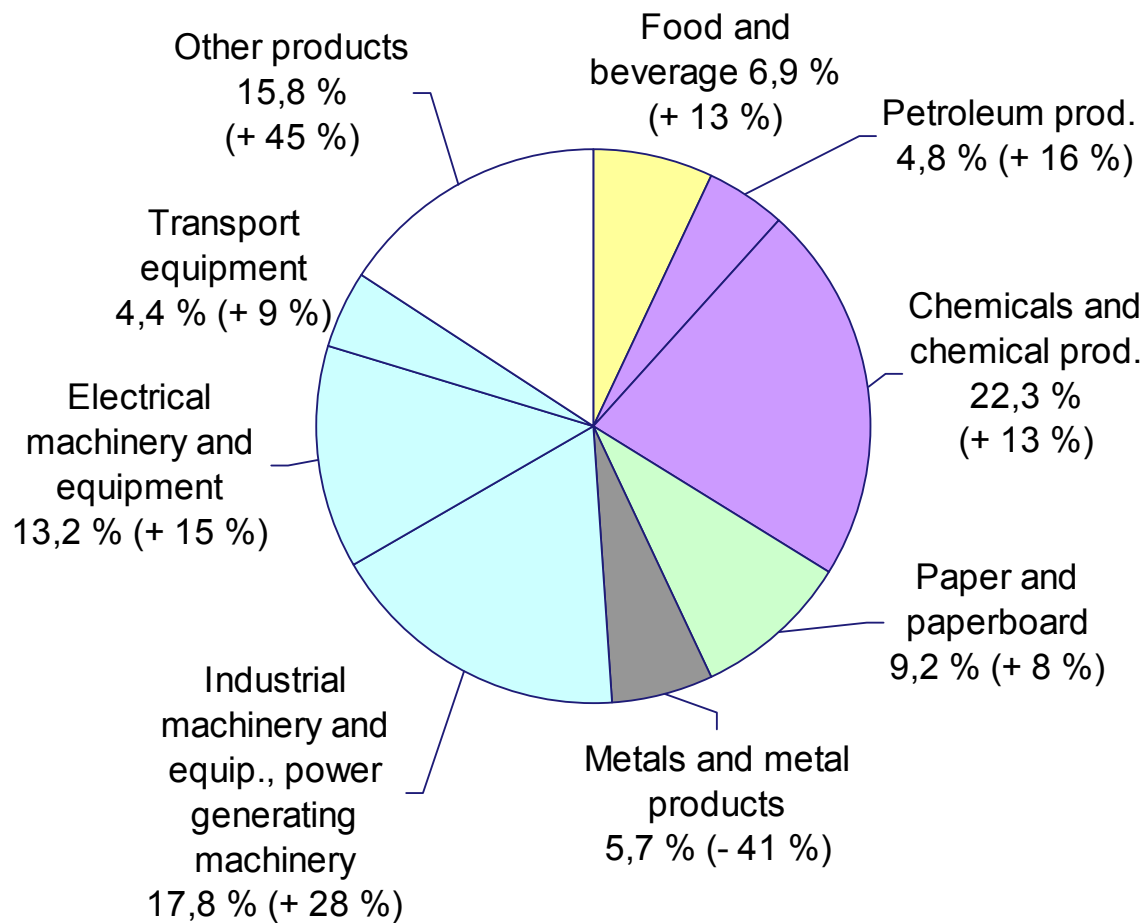






# EXPORTS TO RUSSIA BY PRODUCTS 2011

Share and change from previous year (%)

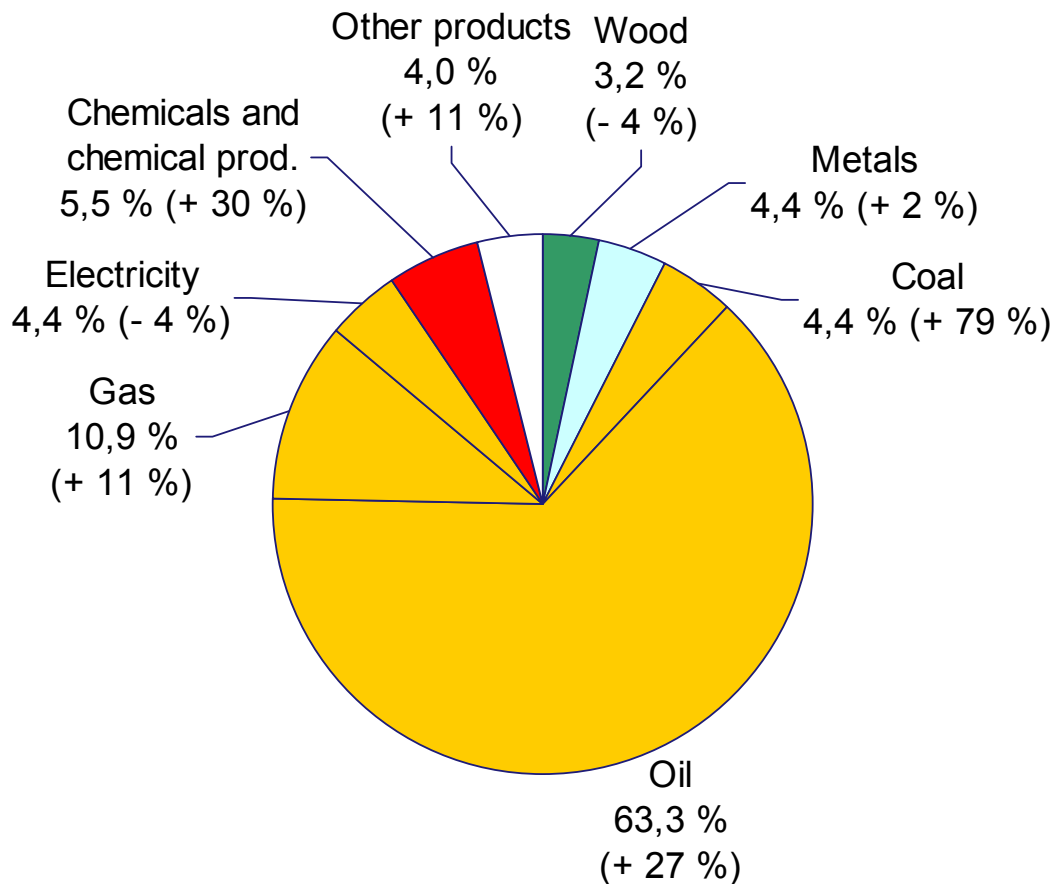


Total value of exports to Russia in 2011 was EUR 5,3 billion (+ 13 %)

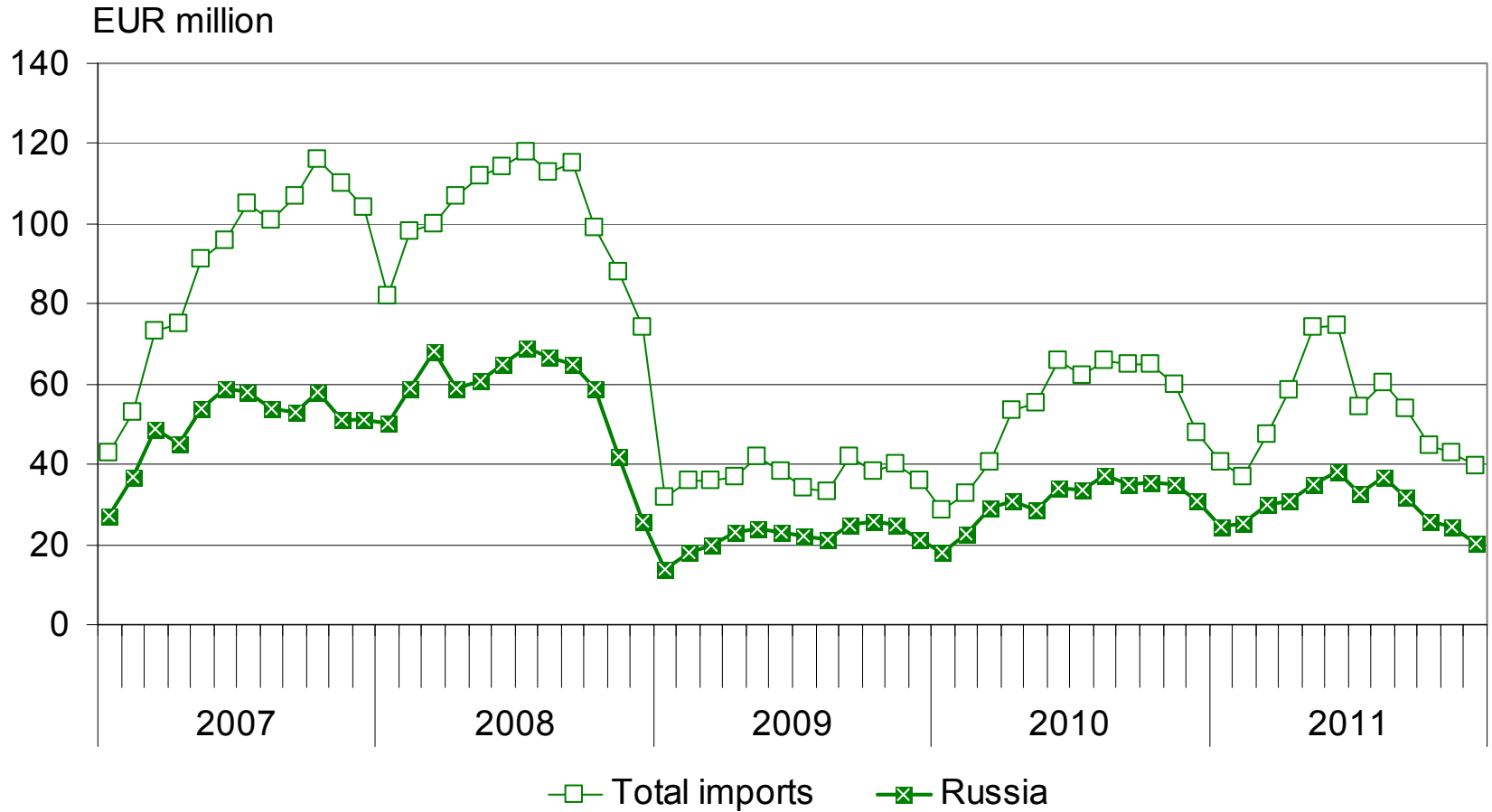


# IMPORTS FROM RUSSIA BY PRODUCTS 2011

Share and change from previous year (%)



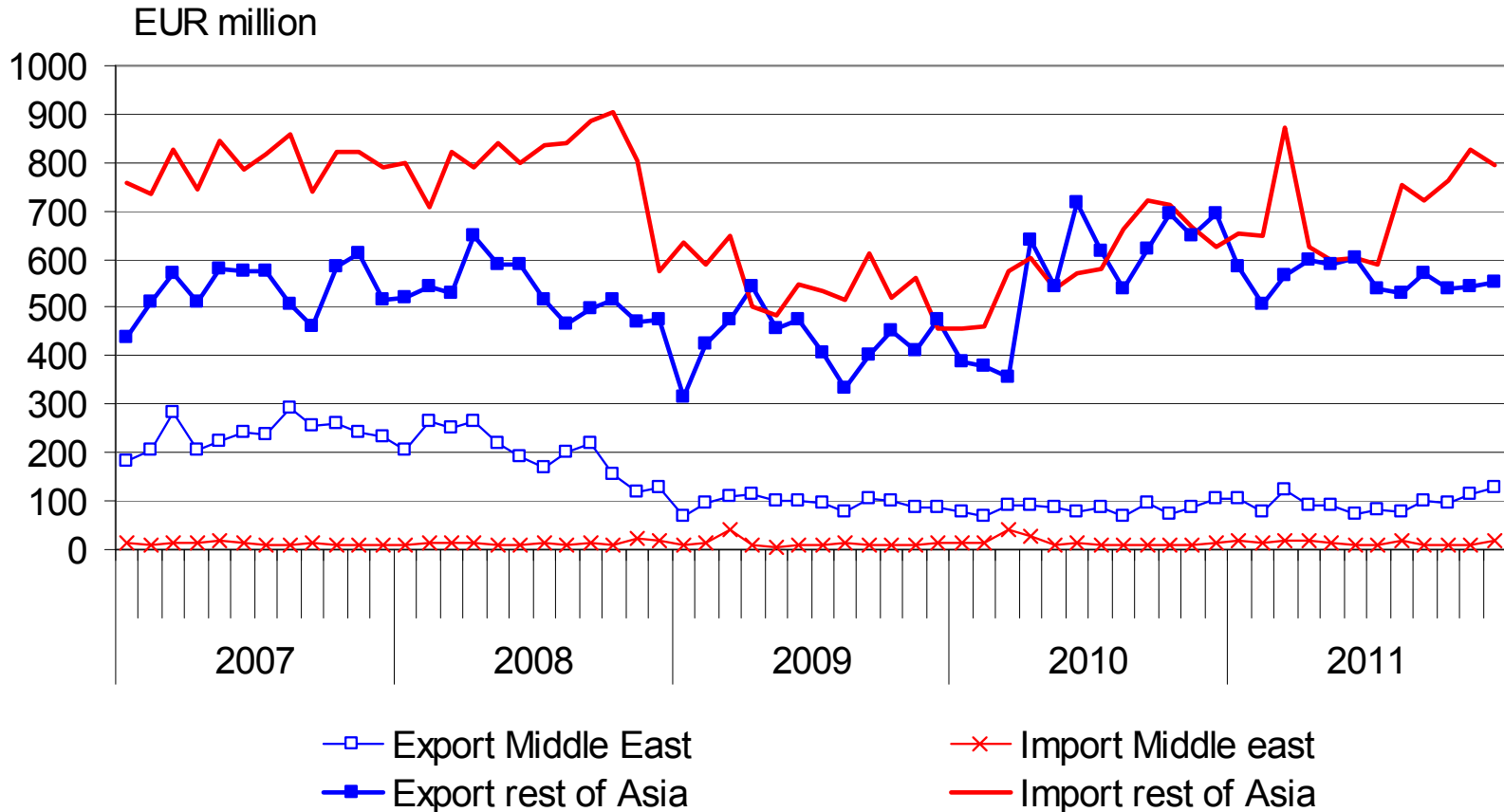
Total value of imports from Russia in 2011 was EUR 11,25 billion (+ 22 %)

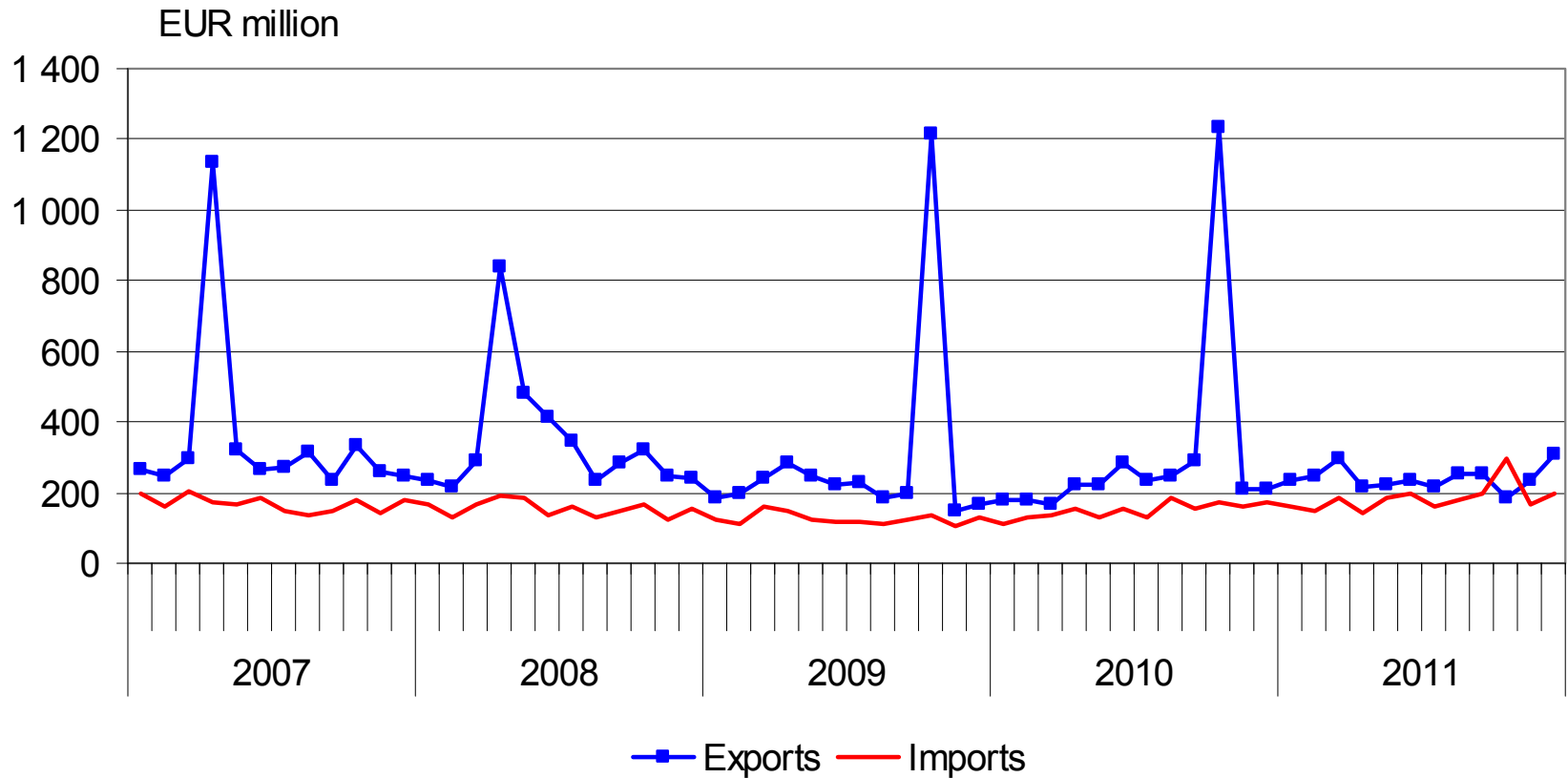


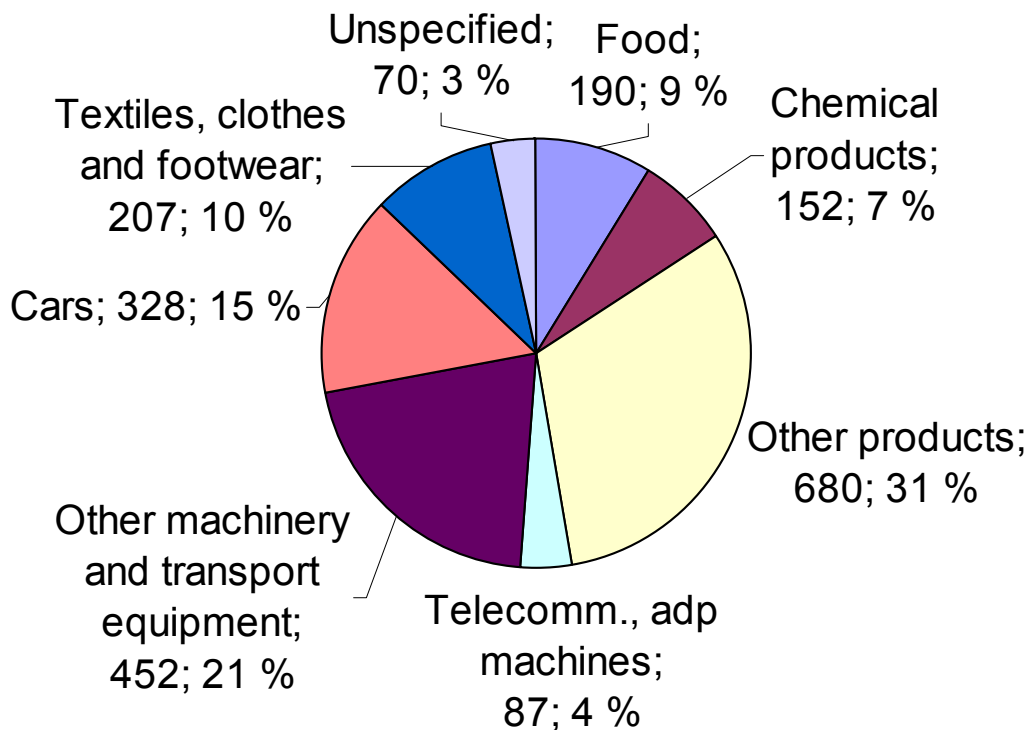


# MONTHLY IMPORTS OF WOOD IN THE ROUGH IN TOTAL AND FROM RUSSIA 2007-2011 (Sitc 247)



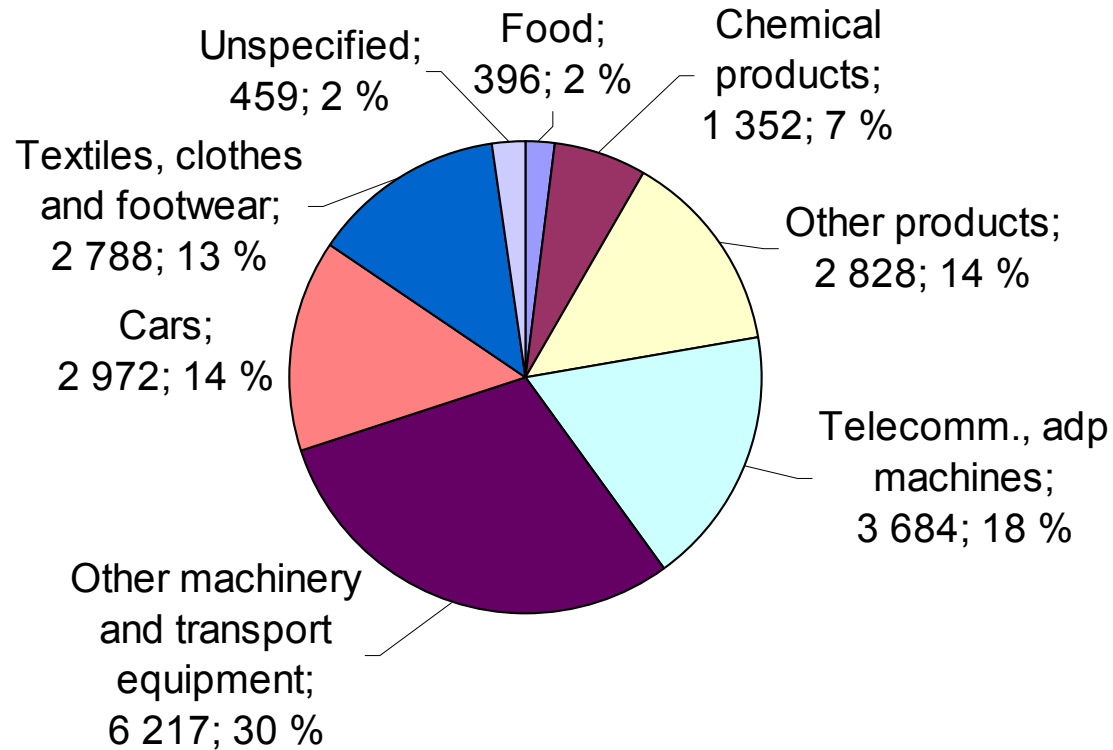






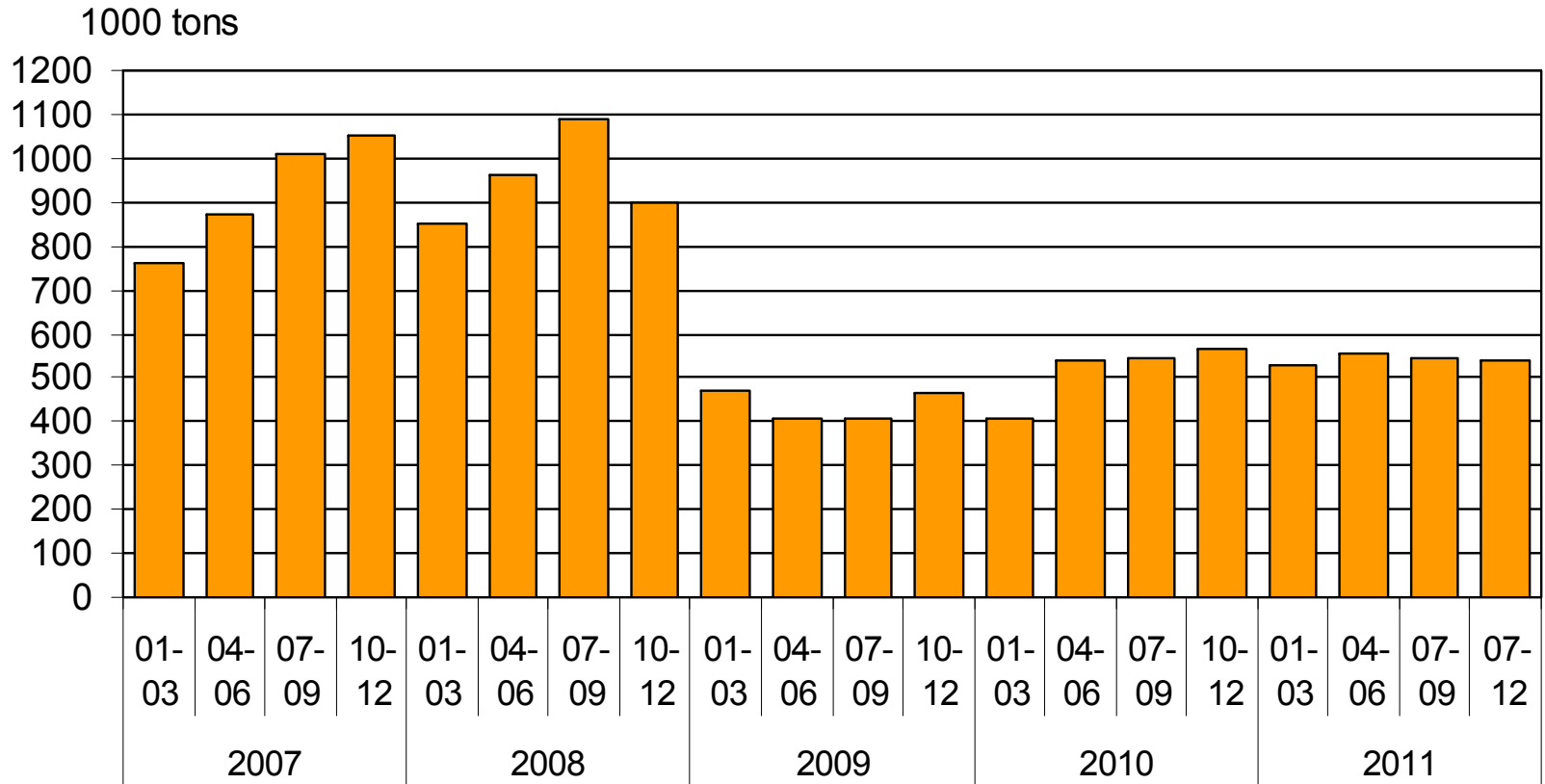


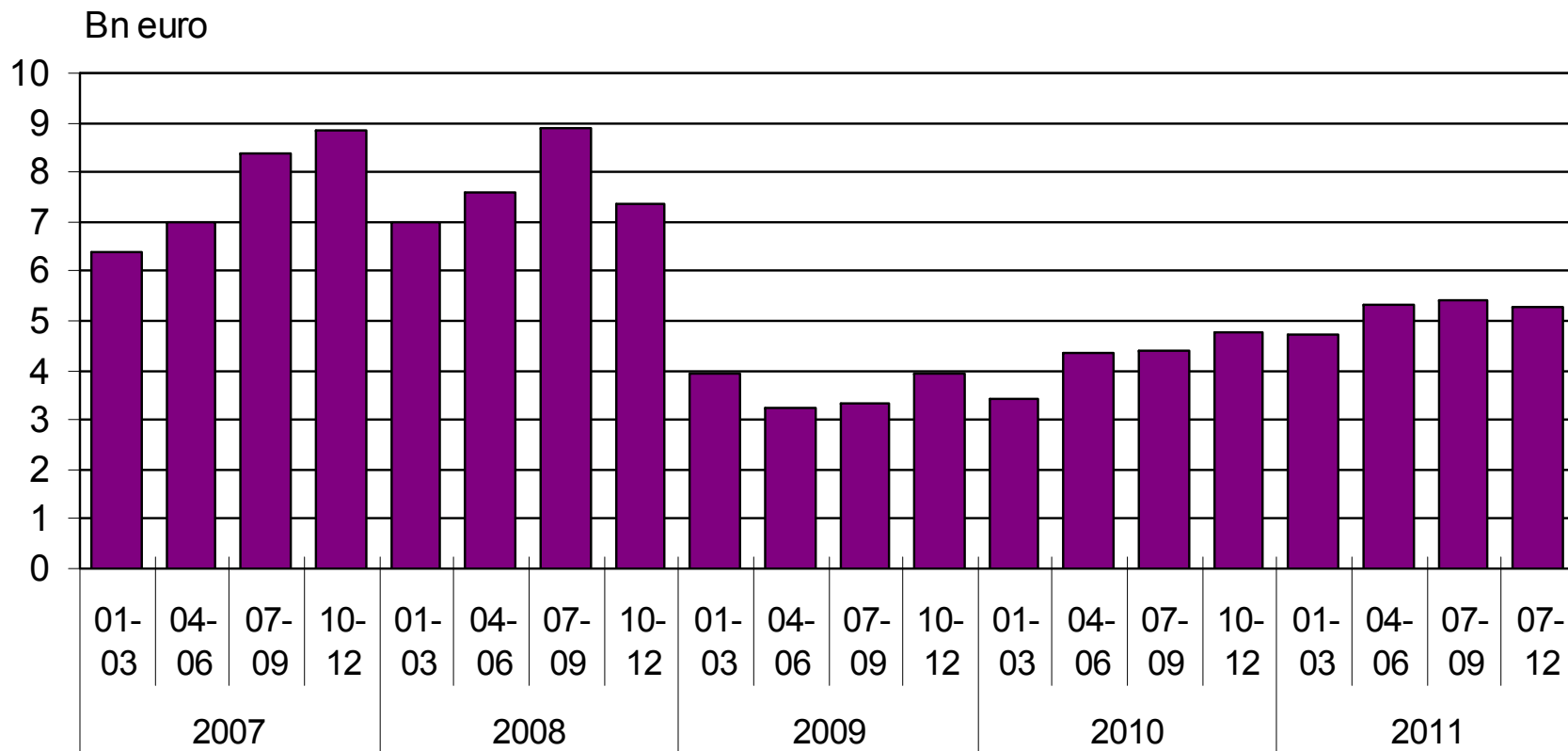
## ROAD TRANSIT; EXPORTS TO THE EAST BY PRODUCT GROUPS IN 2011 (EUR million)





# QUARTERLY ROAD TRANSITS TO THE EAST 2007-2011 (1000 tons)

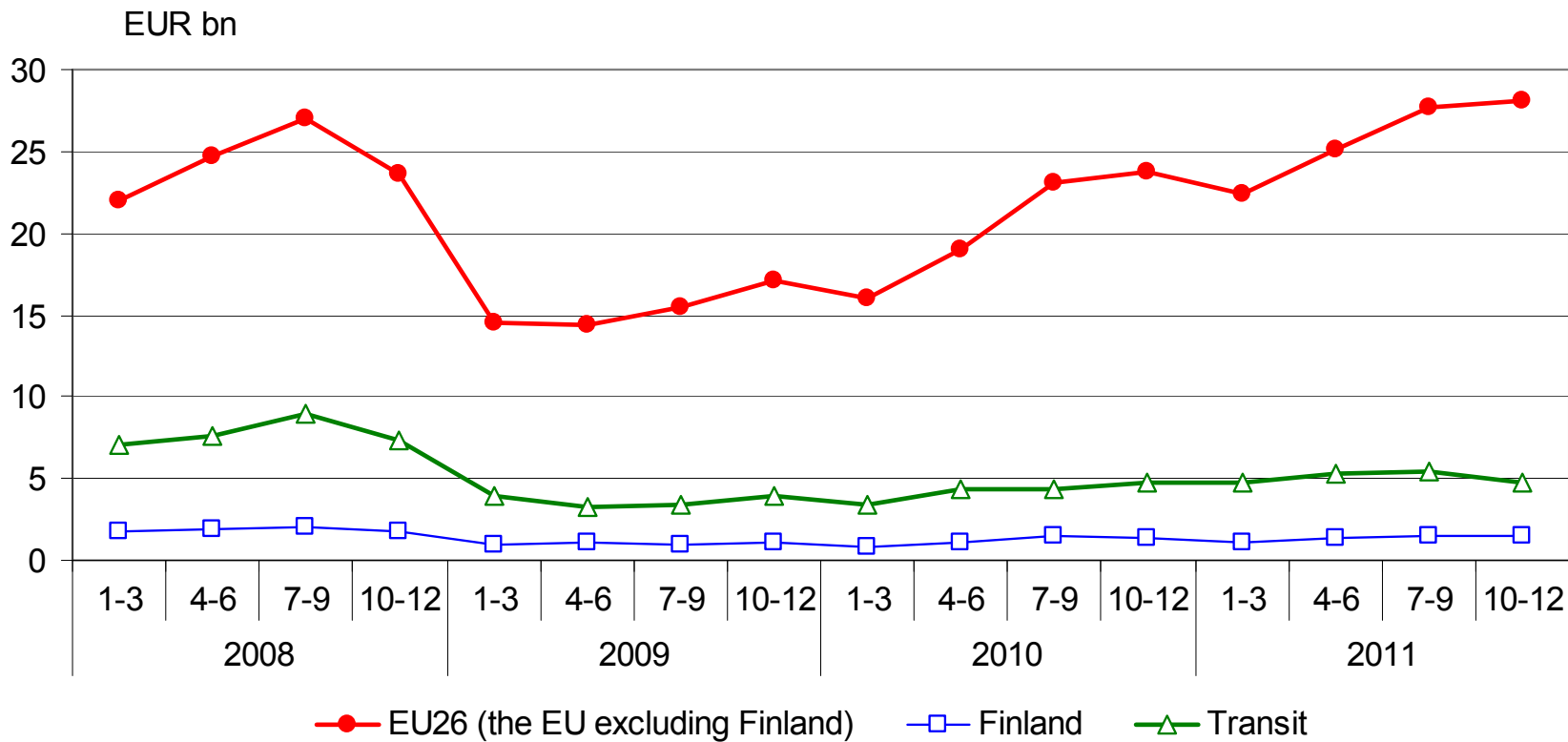






# EXPORTS FROM THE EU AND FINLAND TO RUSSIA AND EASTBOUND ROAD TRANSITS VIA FINLAND

Quarterly figures 2008-2011



Source: Eurostat (for EU statistics)